



*Celebrating 32 Years of Quality, Design & Excellent Client Service*

1306 Rio Grande Blvd. NW, Albuquerque, NM 87104 • 505.255.6400 Voice • 505.268.6954 Fax  
www.nca-architects.com info@nca-architects.com

ARCHITECTS • PLANNERS • AIA

## ADDENDUM # 001

**DATE: 4/22/2026**

**ARCHITECT**

NCA Architects  
Albuquerque, NM

**PROJECT**

Santa Fe Magistrate Courthouse  
NCA Job Number: A22.07

**OWNER**

**New Mexico Administrative Office of the Courts  
ITB-2026-AOC-005**

This addendum forms a part of the Contract Documents and modifies the original specifications and drawings dated 2/16/2026. Acknowledge receipt of this addendum in the space provided in the Bid Form. Failure to do so may subject the bidder to disqualification.

**A. SPECIFICATIONS**

1. Specification – Electrical: Reference attached Electrical Specification Modifications from the Response Group and dated April 17, 2026.

**B. DRAWINGS**

1. Drawings – Electrical: Reference attached Electrical Drawing Modifications from the Response Group and dated April 17, 2026.
2. Reference attached Sheet M-901 for modifications to DDC Controls Network Schematic. New Manufacturer's Control System is to be utilized.

**C. RESPONSE TO QUESTIONS**

1. Reference attached Electrical Cover Letter from the Response Group and dated April 7, 2026 for responses to electrical questions.
2. Sheets LP101 and LI101: The correct drawing scale is 1"= 20.0'.
3. Elevator Car Floor Finishes: Elevator Unit IT1 Detainee Transport: Steel Floor by Elevator Manufacturer. Unit 2S Staff Elevator and 3P Public Transport: Floor Finish – Carpet by Carpet Manufacturer.
4. Stucco System: Specification 09-2400 is the correct stucco system. Reference attached prior approval for Sto Corp Powerwall Drainscreen as an equal.
5. Sheet A-611 Finish Legend Ceiling Finish SCS-1: There is no specification for the manufacturer of the secure ceiling. The secure ceiling requirements are as follows: Heavy Duty drywall grid system (minimum 16 gage), Heavy gage suspension wires spaced 3'-0" o.c. and 1 layer of 5/8" impact resistant gypsum board such as Johns Manville Securock, Georgia Pacific ToughRock or USG Fiberock. Install expanded diamond mesh galvanized lath (2.5 lbs/sq. yd). Plaster, prime and paint. All fasteners to be tamper resistant. Steel blocking to be used at all light fixtures, vents, and security cameras.

**D. SUBSTITUTION REQUESTS/ PRIOR APPROVALS**

Based on data submitted to the Architect, prior to bid in accordance with Instructions to Bidders, substitution of equal products from the following manufacturers are allowed:

1. Specification 10-2113 Toilet Compartments: Metpar Powder Shield as Manufactured by Scranton Products is an approved substitution.
2. Specification 08-3460 Detention Steel Doors and Frames: Detention Hollow Metal Doors and Frames as manufactured by Sweeper Metal Fabricators Corp is an approved as noted substitution: Detention Hollow metal doors and frames must be coordinated with approved detention hardware and include cuff ports as specified in the Drawings and Project Manual.



*Celebrating 32 Years of Quality, Design & Excellent Client Service*

1306 Rio Grande Blvd. NW, Albuquerque, NM 87104 • 505.255.6400 Voice • 505.268.6954 Fax  
www.nca-architects.com info@nca-architects.com

ARCHITECTS • PLANNERS • AIA

3. Specification 08-4113 Aluminum Framed Storefronts (Non-Thermal and Thermal): Manko Window Systems as manufactured by Manko Windows is an approved substitution.
4. Specification 26-5000 Lighting: RKL is an approved as noted substitution. **RKL submitted Light Fixture Type 'A' is rejected. RKL submitted Light Fixture Type 'M4' is rejected. RKL submitted Light Fixture Type 'M8' is rejected.**
5. Specification 26-5000 Lighting: Bell and McCoy is an approved as noted substitution. **Bell and McCoy Light Fixture Type 'A' is rejected.**
6. Specification 09-2400 Portland Cement Stucco: Sto Corp Sto Powerwall Drainscreen is an approved equal to the product specified.

E. GENERAL INFORMATION

**END OF ADDENDUM 001**



**To:** NCA Architects  
**Attn:** Tom Wilber  
**Project:** Santa Fe Magistrate Courthouse  
**NCA Job#:** A22.07  
**TRG Job#:** 22144  
**RE:** Addenda #001

---

**April 17<sup>th</sup>, 2026**

Dear Tom,

Please include the following items in the next issued addenda.

**1. DRAWING MODIFICATIONS:**

**Drawing 001 – Electrical Site Plan (REV1 – Dated 4-17-2026):**

- Added location of Existing PNM Switchgear #SW-2050a, as well as routing between Switch and New Transformer. Added Associated Keyed Notes #21 and #22.
- Added location of Existing Communication Enclosure, Existing to Remain. Added Associated Keyed Note #23.
- Added location of Existing Telecom Pedestal, as well as routing between Pedestal and ‘Point of Demarcation’. Added Associated Keyed Notes #24, #25 and #26.
- Added location of Irrigation Controller and 120V-Single Phase Power Connection. Added Associated Keyed Note #27.
- Added General Note ‘E’, referencing ‘Special Systems – Responsibility Matrix’ on Sheet E403.

**Drawing 104 – Light Fixture Schedule (REV1 – Dated 4-17-2026):**

- Completed Fixture Descriptions and Electrical Characteristics for Fixture Types ‘XD’, ‘XE’, ‘XH’, ‘EX’, ‘EMX’ and ‘EM’.
- Changed Catalog Number and Electrical Characteristics for Fixture Type ‘XC’.

**Drawing 201 – Power Plan – Grade Level (REV1 – Dated 4-17-2026):**

- Re-assigned Homerun Circuit Number associated with Elevator Main Power and Cab Lighting / Fan circuit for all (3) Elevator. Elevators have been removed from Emergency Power.

**Drawing 211 – Receptacle Plan – Grade Level (REV1 – Dated 4-17-2026):**

- Added additional emergency outlets, mounted 12” below Ceiling ACT, for CCTV Monitors within Command Room 127. New Circuits LEM-39 and LEM-41. Added Associated Keyed Note #12.

**Drawing 301 – Special Systems Plan – Grade Level (REV1 – Dated 4-17-2026):**

- Added General Note ‘E’, referencing ‘Special Systems – Responsibility Matrix’ on Sheet E403.
- Added additional Junction Boxes for CCTV output Signal to CCTV Monitors, mounted 12” below Ceiling ACT, for CCTV Monitors within Command Room 127. Added Associated Keyed Note #18.
- Added 2-Data outlet at ‘outside’ of Clerk 139 Window, mounted at +6” Above Counter, for connection to Credit Card Machine. Typical of (4) locations.

## **1. DRAWING MODIFICATIONS (Continued):**

### **Drawing 302 – Special Systems Plan – Second Level (REV1 – Dated 4-17-2026):**

- Added General Note ‘E’, referencing ‘Special Systems – Responsibility Matrix’ on Sheet E403.

### **Drawing 303 – Special Systems Plan – Third Level (REV1 – Dated 4-17-2026):**

- Added General Note ‘E’, referencing ‘Special Systems – Responsibility Matrix’ on Sheet E403.
- Showing Smoke Detector Device at Top of Elevator Shafts (x3 Locations), to coincide with Detail ‘D1’, Sheet E402.

### **Drawing 402 – Electrical Details (REV1 – Dated 4-17-2026):**

- Re-assigned Homerun Circuit Number associated with Elevator Main Power and Cab Lighting / Fan circuit for all (3) Elevator. Elevators have been removed from Emergency Power.
- Expanded ‘FIRE ALARM FUNCTIONAL MATRIX’ to include Alarm Actions and Resulting Reactions related with Elevator Recall and Shutdown.
- Keyed Notes have been modified to correspond correctly to Drawing elements; Keyed Note #13 and #14 are NOT USED.

### **Drawing 403 – Electrical Details (REV1 – Dated 4-17-2026):**

- Added ‘SPECIAL SYSTEMS – RESPONSIBILIT MATRIX’.
- Added Detail ‘A4’ – CCTV SYSTEM RISER DIAGRAM’.

### **Drawing 410 – Enlarged Electrical Plans (REV1 – Dated 4-17-2026):**

- In Electrical Room 106, Panelboard ‘HEM’ has been modified (from 400A, to 100A).
- In Electrical Room 106, ATS #1 has been modified (from 400A to 100A). Modified Keed Note #4.
- Equipment Re-Sizing is being driven by the (3) Elevators having been removed from Emergency Power, served by Normal Power with Emergency Battery of Lowering of Cab.
- Added General Note ‘E’, referencing ‘Special Systems – Responsibility Matrix’ on Sheet E403.

### **Drawing 501 – Power Riser Diagram (REV1 – Dated 4-17-2026):**

- Power Riser Diagram – Removed reference to PNM Pole and Pole Riser. In its place, existing PNM Switch #SW2050a (S&C PME-9) is shown. Modified Keyed Note #2 accordingly.
- Re-Sized Stand-By Diesel Engine Generator. Was 275kW / 343.8kVA with 400-Gal Fuel Tank; Now Re-Sized to 60kW / 75kVA with 120-Gal Fuel Tank. Modified Keyed Note #11 accordingly.
- Re-Sized ATS #1. Was 400A; Now Re-Sized to 100A. Modified Keyed Note #15 accordingly.
- Circuit Breaker in Main Distribution Panelboard ‘MDP’ that served Normal Source to ATS #1 Re-Sized; Was 400A/3P; Now Re-Sized to 100A/3P.
- Re-Sized Panelboard ‘HEM’ Re-Sized; Was 400A, now Re-Sized to 100A.
- Equipment Re-Sizing is being driven by the (3) Elevators having been removed from Emergency Power, served by Normal Power with Emergency Battery of Lowering of Cab.
- Modified Keyed Note designations for Feeders associated with Re-Sized Engine-Generator, ATS#1, and Panelboard ‘HEM’.
- Revised Detail ‘D1’ – ENGINE/GENERATOR PAD DETAIL, to reflect revised Dimensional Data associated with Re-Sized Engine/Generator.
- Revised ‘NEW ENGINE/GENERATOR CALCULATIONS’, to reflect revised Load Calculations associated with Re-Sized Engine/Generator and Panelboard ‘HEM’.

## **1. DRAWING MODIFICATIONS (Continued):**

### **Drawing 503 – Panel / Load Schedules (REV1 – Dated 4-17-2026):**

- Panel Schedule 'MDP':
  - Circuit Breaker that served Normal Source to ATS #1 Re-Sized; Was 400A/3P; Now Re-Sized to 100A/3P.
  - Elevators #1 (Detainee), #2 (Staff) and #3 (Public) have been re-fed from Normal Power 'MDP'.
  - Equipment Load Data has changed; Elevators removed from 'HEM', Fed directly from 'MDP'.
  - Equipment Re-Sizing is being driven by the (3) Elevators having been removed from Emergency Power, served by Normal Power with Emergency Battery of Lowering of Cab.
- Panel Schedule 'HEM':
  - Re-Sized Panelboard 'HEM'; Was 400A, now Re-Sized to 100A.
  - Circuit Breaker that had previously fed (3) Elevators have become 'SPARE'.
  - Equipment Re-Sizing is being driven by the (3) Elevators having been removed from Emergency Power, served by Normal Power with Emergency Battery of Lowering of Cab.
- Panel Schedule 'LEM':
  - Circuit LEM-8 becomes 'SPARE'.
  - Added Circuits LEM-39 and LEM-41 for Power to CCTV Monitors in Command Room 127.
- Panel Schedule 'L1':
  - Circuit L1-85 Added: Lighting for Elevator Cab Lights and Fan. (Previously LEM-8).
  - Circuit L1-87 Added: Irrigation Controller.

## **2. SPECIFICATION MODIFICATIONS:**

### **Specification Section 26 3213 – ENGINE GENERATORS:**

- PART 2 – PRODUCTS, 2.1 DIESEL ENGINE\_GENERATOR SET, Paragraph 'C', Item 1 shall read:  
"Shall be not less than ~~275 kW / 343.8 kVA~~ **60kW / 75 kVA** at 480Y/277 Volts, 3-Phase, 4-Wire, 60 Hz and 0.80 power factor."
  - Equipment Re-Sizing is being driven by the (3) Elevators having been removed from Emergency Power, served by Normal Power with Emergency Battery of Lowering of Cab.

## **3. PRIOR APPROVALS – FIRE ALARM SYSTEM:**

**Specified**  
Notifier

**Prior Approval**  
Edwards Systems Technologies (EST)

**4. PRIOR APPROVALS – LIGHTING FIXTURES:**

<b><u>Fixture Type</u></b>	<b><u>Specified</u></b>	<b><u>Prior Approval</u></b>
Ab	BARBICAN	none
Ar	BARBICAN	none
Ay	BARBICAN	none
B	SPITZER	LSI, PACO
C	SPITZER	LSI, PACO
D	HALO	H.E. Williams, GOTHAM
K	SPITZER	H.E. Williams, LITHONIA
L2	METALUX	H.E. Williams, LITHONIA
L4	METALUX	H.E. Williams, LITHONIA
M4	CORELITE	LSI
M8	CORELITE	LSI
R	FAIL-SAFE	KURTZON, PACO
S	FAIL-SAFE	KURTZON, PACO
T	FAIL-SAFE	KURTZON, PACO
XA1	U.S. ARCHITECTURAL	LSI, LITHONIA
XA2	U.S. ARCHITECTURAL	LSI, LITHONIA
XB	U.S. ARCHITECTURAL	AMERON, NLS
XC	EVERGREEN	SCOTT ARCHITECTURAL, BEGA
XD	HALO	H.E. Williams, GOTHAM
XE	SURE-LITES	MULE
XF	FC LIGHTING	SCOTT ARCHITECTURAL
XG	ERCO	ARLUCE, HYDREL
XH	LUMARK	LSI, LITHONIA
EX	SURE-LITES	MULE, LITHONIA
EMX	SURE-LITES	MULE, LITHONIA
EM	SURE-LITES	MULE, LITHONIA

**End of ADDENDA 001**

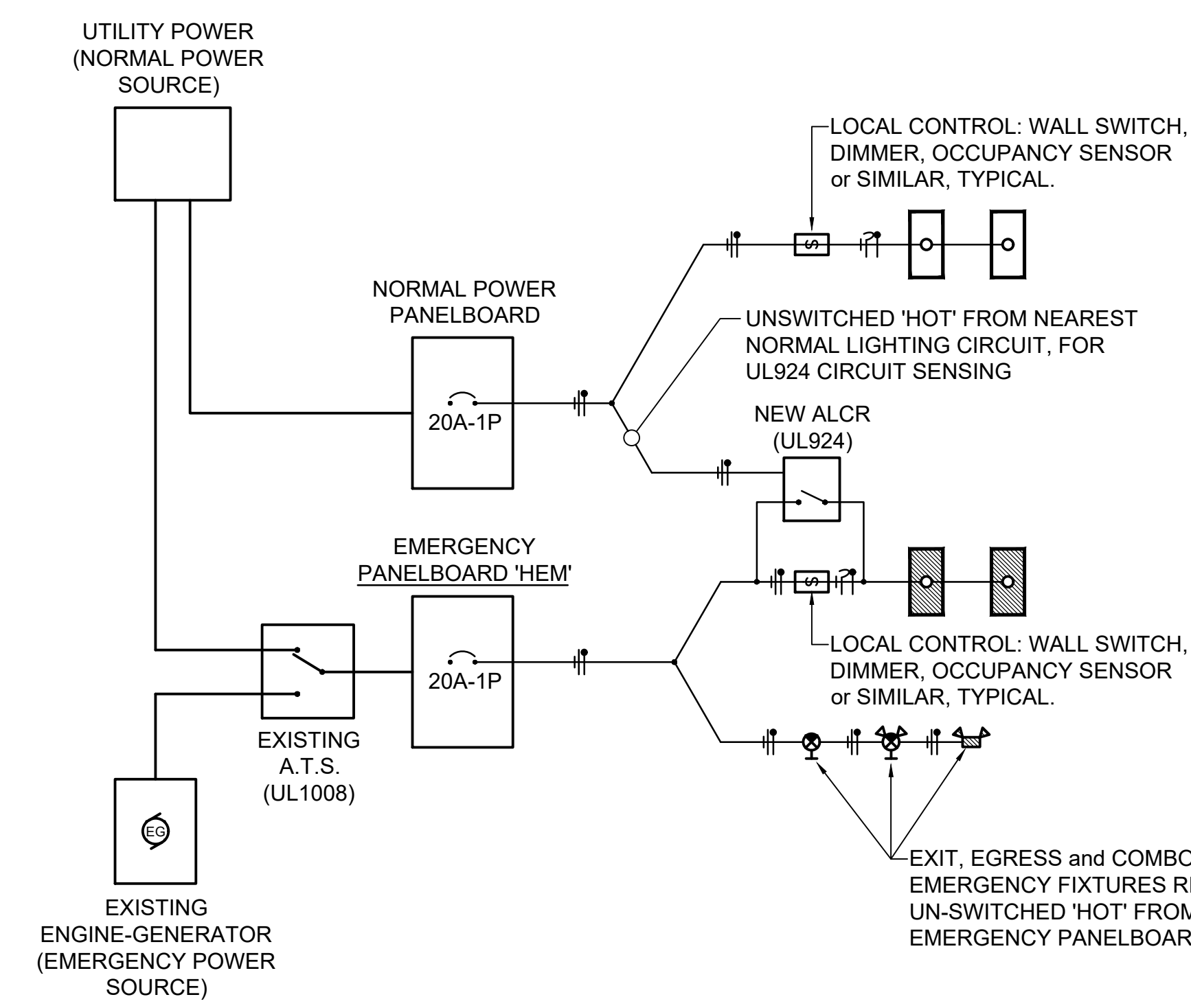
Please do not hesitate to call if you have any comments or questions.

Sincerely,

*Michael S. Pomeroy*

Michael S. Pomeroy  
Electrical Project Manager, the Response Group, Inc.  
(505) 323-7629 – Office  
(505) 235-3515 – Cell  
[mikepomeroy@trg-inc.net](mailto:mikepomeroy@trg-inc.net)





**SEQUENCE of OPERATION:**  
 UNDER 'NORMAL' CONDITIONS, UTILITY POWER PROVIDES POWER TO EMERGENCY PANEL 'HEM' VIA A.T.S. BOTH NORMAL and EMERGENCY LIGHTING CIRCUITS MAY BE CONTROLLED VIA LOCAL WALL SWITCH, DIMMER, OCCUPANCY SENSOR or SIMILAR.  
 UPON LOSS OF UTILITY POWER, ENGINE-GENERATOR STARTS and A.T.S. TRANSFERS TO 'EMERGENCY'. LOSS OF NORMAL CIRCUIT SENSING AT ALCR / UL924 DEVICE CAUSES ALCR TO 'BYPASS' LOCAL CONTROL WITH EMERGENCY LIGHTING RETURNING TO 'ON' / FULL OUTPUT REGARDLESS OF LOCAL CONTROL POSITION.

**B1 EMERGENCY LIGHTING GENERAL WIRING DIAGRAM**  
 NOT TO SCALE

LIGHT FIXTURE SCHEDULE									
Fixture Type	Fixture Description	Driver Voltage	Wattage	Lamp Type	Lumen Output	Efficacy (W/Lm)	Lens	Fixture Mounting	
Ab	2' x 2' LED Ceiling Recessed / 2" Projecting Box below ceiling, Architect-selected color / fabric surround (SMOKE / #901)	MVOLT (Wired 277V) 0-10V Dimming (1%)	42	LED 3500K 80+ CRI	4400	105	Acrylic	Ceiling Recessed	
Ar	2' x 2' LED Ceiling Recessed / 4" Projecting Box below ceiling, Architect-selected color / fabric surround (CIDER / #159)	MVOLT (Wired 277V) 0-10V Dimming (1%)	42	LED 3500K 80+ CRI	4400	105	Acrylic	Ceiling Recessed	
Ay	2' x 2' LED Ceiling Recessed / 6" Projecting Box below ceiling, Architect-selected color / fabric surround (SOFT YELLOW / #1216)	MVOLT (Wired 277V) 0-10V Dimming (1%)	42	LED 3500K 80+ CRI	4400	105	Acrylic	Ceiling Recessed	
B	2' x 4' LED Ceiling Recessed / Indirect 'Volumetric' Troffer, Universal Input (120/277V) Dimmable Driver, CCT and Lumen Selectable	MVOLT (Wired 277V) 0-10V Dimming (1%)	48	LED 3500K 80+ CRI	5408	113	Acrylic	Ceiling Recessed	
C	2' x 2' LED Ceiling Recessed / Indirect 'Volumetric' Troffer, Universal Input (120/277V) Dimmable Driver, CCT and Lumen Selectable	MVOLT (Wired 277V) 0-10V Dimming (1%)	38	LED 3500K 80+ CRI	4142	109	Acrylic	Ceiling Recessed	
D	6" Diameter, LED Downlight, 1000Lm	MVOLT (Wired 277V) 0-10V Dimming (1%)	10	LED 3500K 80+ CRI	1173	117	Acrylic	Ceiling Recessed	
K	4' Linear LED Surface Mounted Strip, Universal Input (120/277V)	MVOLT (Wired 277V) Non-Dimmable	40	LED 3500K 80+ CRI	4597	115	Acrylic	Ceiling Surface	
L2	Wall-Mounted LED Vanity Fixture METALUX #25T1L1040R	MVOLT (Wired 277V) Non-Dimmable	10	LED 3500K 80+ CRI	1045	105	Acrylic	Wall centered above Mirror	
L4	Wall-Mounted LED Vanity Fixture METALUX #45T4L4040R	MVOLT (Wired 277V) Non-Dimmable	40	LED 3500K 80+ CRI	4434	111	Acrylic	Wall centered above Mirror	
M4	4' Wall-Mounted LED Stairway Fixture CORELITE #DWI-WD-40L835-1D-UNV-STD-W-WM-4	MVOLT (Wired 277V) Non-Dimmable	32	LED 3500K 80+ CRI	4021	126		Wall in Stairway	
M8	8' Wall-Mounted LED Stairway Fixture CORELITE #DWI-WD-30L835-1D-UNV-STD-W-WM-8	MVOLT (Wired 277V) Non-Dimmable	64	LED 3500K 80+ CRI	8042	126		Wall in Stairway	
R	Correctional, Corner-Mounted, 4' LED FAILSAFE #FCC-X-4-LD4-1STD-35-UNV-80-86-EDD-1	MVOLT (Wired 277V) Non-Dimmable	34	LED 3500K 80+ CRI	3295	97		Surface Corner Mounted	
S	Correctional, Recessed, 1' x 2' LED FAILSAFE #FMR-12-2-LD4-2H-35-UNV-80-86-EDD-1	MVOLT (Wired 277V) Non-Dimmable	44	LED 3500K 80+ CRI	3697	84		Ceiling Recessed	
T	Correctional, Surface, 1' x 4' LED FAILSAFE #FUSL-D-12-4-LD4-2-STD-35-UNV-80/84-EDC1	MVOLT (Wired 277V) Non-Dimmable	67	LED 3500K 80+ CRI	6640	99		Ceiling Surface	
XA1	20' Pole, Single Head, Exterior Pole-Mounted Area Light Fixture, Type 4 Forward Throw Optics, BUG Rating: 3-0-3, bronze finish U.S. Architectural #QSR/485Q/PLED-III/2/nw/ra18019/dbz	MVOLT (Wired 277V) Non-Dimmable	121	LED 4000K 70+ CRI	18051	149		Pole Mounted E103, Dtl 'C1'	
XA2	20' Pole, Single Head, Exterior Pole-Mounted Area Light Fixture, Type 4 Forward Throw Optics, BUG Rating: 3-0-3, bronze finish McGraw Edison #GALN-SA4-C-740-U-T4FT-BZ	MVOLT (Wired 277V) Non-Dimmable	121	LED 4000K 70+ CRI	18051	149		Pole Mounted E103, Dtl 'C1'	
XB	8" Dia., 42" Tall LED Bollard, Natural Precast Concrete Body with Sandblast Finish, Bronze Finish U.S. Architectural #BDCB-LED-IL-36LED-NW-UNV-RAL8019T	MVOLT (Wired 277V) Non-Dimmable	36	LED 4000K 70+ CRI	3600	100		Ground Mounted E103, Dtl 'D1'	
XC	Exterior Wall-Mounted LED Sconce EVERGREEN #90L-REC-50-30W-MM-WF-DIM35K-WET	MVOLT (Wired 277V) Non-Dimmable	30	LED 3500K 80+ CRI	2530	84	White Frosted Acrylic	Exterior Wall Mounted +10'-0" AFG (to Bottom)	
XD	Exterior 6" Diameter, LED Downlight, 1000Lm HALO #HC6100D10-HM60525835-61WDH	MVOLT (Wired 277V) 0-10V Dimming (1%)	10	LED 3500K 80+ CRI	1173	117	Acrylic	Ceiling Recessed	
XE	Exterior Wall-Mounted LED Egress / Emergency Fixture Sure-Lites #SELD-W-T-A-29-BZ-SD	MVOLT (Wired 277V) Non-Dimmable	2	LED With Unit	200	100		Exterior Wall Mounted +10'-0" AFG (to Bottom)	
XF	Exterior Wall-Mounted LED Up/Down Wall Sconce, Black Finish FC Lighting #FCW1500-UNV-4K-CR184-BKE-UNL-D3060/9L	MVOLT (Wired 277V) Non-Dimmable	18	LED 4000K 70+ CRI	1750	97		Exterior Wall Mounted +10'-0" AFG (to Bottom)	
XG	Exterior Ground-Mounted Adjustable Floodlight, 20X60 degree Oval Flood ERCO #35534.023	MVOLT (Wired 277V) Non-Dimmable	27	LED 4000K 70+ CRI	2700	100		Ground Mounted	
XH	Exterior Wall Pack, Type IV Wide Distribution, 59W Input / 7100 Lumen Output (Nominal), BUG Rating: B2-U0-G2, Dark Bronze finish LUNARK #RRV-P-PA1-B-740-U-T4W-WM-BZ	MVOLT (Wired 277V) Non-Dimmable	59	LED 3500K 80+ CRI	7102	120		Exterior Wall Mounted +8'-0" AFG (to Bottom)	
EX	Universal Mount (Ceiling / Wall / End) Exit Sign, Red Letters on White Background, White Housing, AC-Input Only, Number of Faces and Directional Chevrons per Plans Sure-Lites #LPX-6	MVOLT (Wired 120V)	5	LED	n/a	n/a		Universal	
EMx	Universal Mount (Ceiling / Wall / End) Exit Sign, Red Letters on White Background, White Housing, AC-Input Only, Number of Faces and Directional Chevrons per Plans, (2) Aimable Heads (3w LED) Sure-Lites #LPXC-R-55-SF	MVOLT (Wired 120V)	5	LED	520	n/a	n/a	Wall Mounted +8'-0" AFF	
EM	Wall Mounted Emergency Egress Wall-Pack, AC-Input Only Sure-Lites #SEL-55-SF	MVOLT (Wired 120V)	10	LED	n/a	n/a		Wall Mounted +8'-0" AFF	

**GENERAL NOTES**  
 A. REFER TO SHEET E601 FOR ELECTRICAL SYMBOL LEGEND and ELECTRICAL PROJECT NOTES / SPECIFICATIONS.

**NCA**  
 ARCHITECTS - PLANNERS - AIA

1306 RIO GRANDE BLVD NW  
 ALBUQUERQUE, NM 87104  
 505-255-6400 505-268-6954 FAX  
 WWW.NCA-ARCHITECTS.COM

ARCHITECT

**THE RESPONSE GROUP, INC.**  
 6705 Academy Rd. NE, Suite B  
 Albuquerque, New Mexico 87109  
 Phone: (505) 323-7629 Fax: (505) 323-7594  
 Email: theresponsegroup@trg-inc.net

CONSULTANT

**THOMAS P. LEBLANC**  
 PROFESSIONAL ENGINEER  
 23211  
 2/13/2026  
 22144

PROJECT TITLE  
**SANTA FE MAGISTRATE COURTHOUSE**

SANTA FE  
 NEW MEXICO

REVISIONS:

NO.	DATE	DESCRIPTION

4/17/26 ADDENDA 01

DRAWN BY: TRG / msp CHECKED BY: TRG / tfr

PROJECT NUMBER:  
 A22.07

DATE:  
 02.13.2026

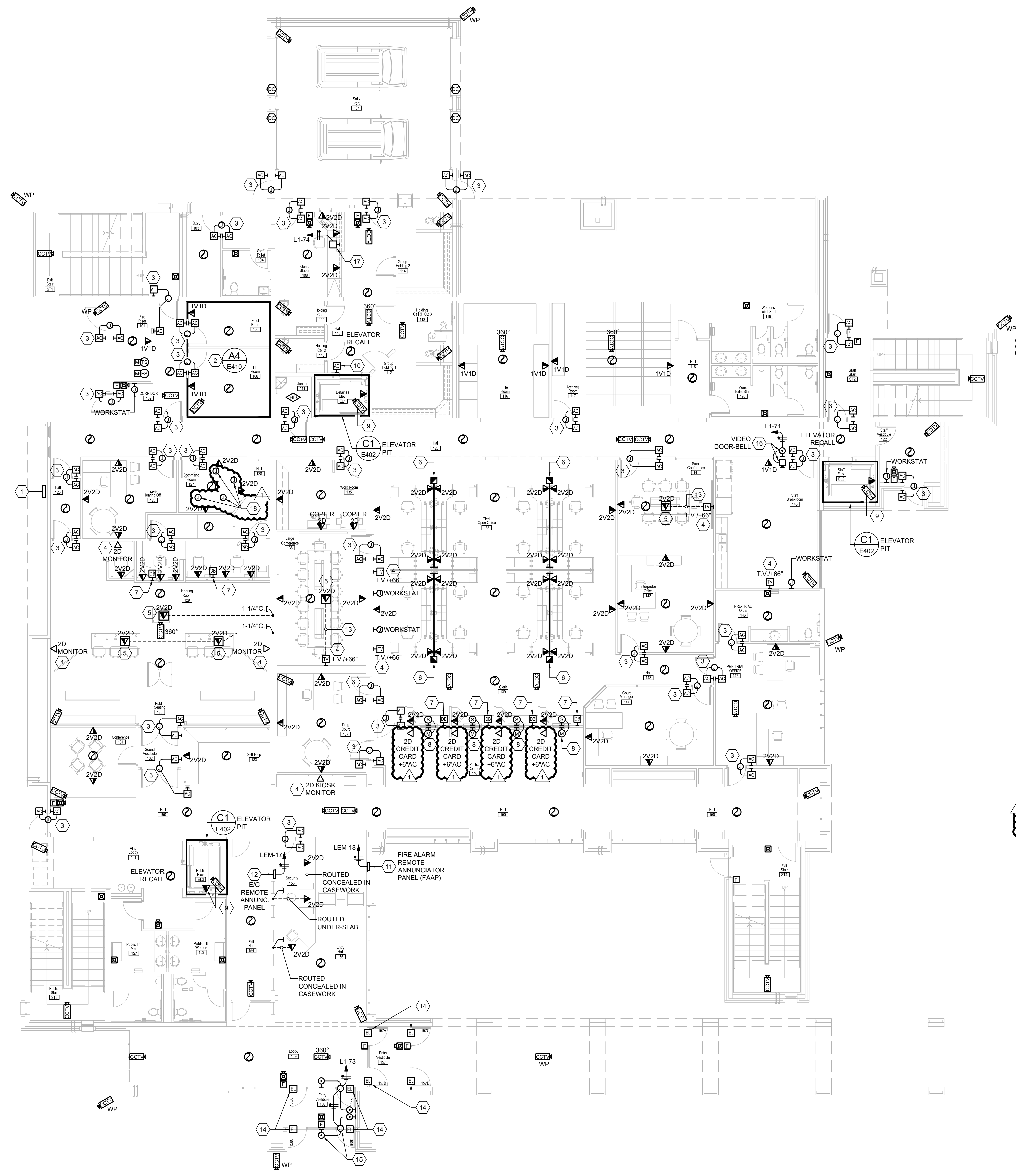
SHEET TITLE:  
**LIGHT FIXTURE SCHEDULE and LIGHTING DETAILS**

SHEET NO:  
**E104**

02.13.2026 - ISSUED FOR PERMIT







A2 SPECIAL SYSTEMS PLAN - GRADE LEVEL

**GENERAL NOTES**

- A. REFER TO SHEET E601, FOR "ELECTRICAL SPECIFICATIONS" AND "PROJECT GENERAL NOTES".
- B. COORDINATE EXACT MOUNTING HEIGHT AND LOCATION OF ALL WALL MOUNTED ELECTRICAL DEVICES (VOICE/DATA OUTLETS, NURSE CALL DEVICES, ETC.) WITH WALL MOUNTED ARCHITECTURAL APPLIANCES (SOAP DISPENSERS, ETC.) PRIOR TO ANY ELECTRICAL ROUGH-IN.
- C. STANDARD MOUNTING HEIGHT OF ALL VOICE/DATA OUTLETS INSTALLED UNDER THIS PROJECT IS +18" A.F.F. (TO BOTTOM OF BOX), UNLESS OTHERWISE STATED ON PLANS OR REFERENCED THROUGH NOTE, DETAIL OR ELEVATION.
- D. REFER TO SHEET E401, FOR "FIRE ALARM RISER DIAGRAM", "FIRE ALARM FUNCTIONAL MATRIX" AND ASSOCIATED NOTES AND DETAILS.
- E. REFER TO SHEET E203 FOR ADDITIONAL FIRE ALARM SCOPE AND DEVICES ASSOCIATED WITH ROOF-MOUNTED EQUIPMENT.

**SPECIAL SYSTEMS NOTE**

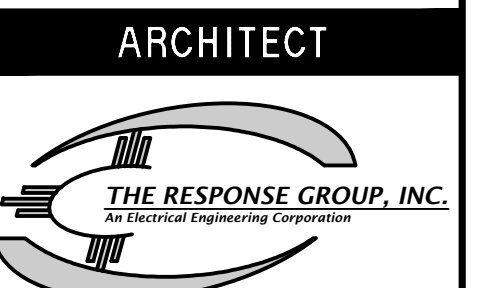
- A. 'SPECIAL SYSTEMS' WORK SHALL CONSIST OF THE FOLLOWING:
  - FIRE ALARM SYSTEM
  - VOICE / DATA NETWORKING
  - ACCESS CONTROL
  - CCTV
  - SECURITY DURESS BUTTONS
  - VIDEO DOOR BELL SYSTEMS
  - THRU-WINDOW INTERCOM SYSTEM
  - GATE CONTROLLERS and CONTROL
- B. THE COURT'S SPECIAL SYSTEM SUB-CONTRACTOR SHALL BE APIC SOLUTIONS, 401 SNAPPOLL ST. NE, ALBUQUERQUE, NEW MEXICO 87109. (505) 345-1381. APIC SOLUTIONS SHALL BE A SUB-CONTRACTOR TO ELECTRICAL CONTRACTOR.
- C. DURING BIDDING PROCESS, APIC SOLUTIONS SHALL PROVIDE A BID LINE-ITEM FOR THEIR LABOR AND MATERIAL COSTS. THIS BID LINE-ITEM SHALL BE UTILIZED BY ALL ELECTRICAL CONTRACTORS BIDDING THIS PROJECT.
- D. ALL WORK ON 'SPECIAL SYSTEMS' SHALL BE PERFORMED BY APIC SOLUTIONS; ELECTRICAL CONTRACTOR SHALL PROVIDE BOXES AND CONDUIT (3/4" MINIMUM) WITH PULLSTRING ONLY. COORDINATION OF BOX SIZES AND CONDUIT REQUIREMENTS WITH APIC SOLUTIONS SHALL BE INCLUDED IN ELECTRICAL CONTRACTOR'S BID. DEVICES AND EQUIPMENT SHALL BE PROVIDED BY APIC SOLUTIONS. DEVICES AND EQUIPMENT SHALL BE INSTALLED, WIRED, TERMINATED AND PROGRAMMED BY APIC SOLUTIONS.
- E. REFER TO SHEET E403 - 'SPECIAL SYSTEMS - RESPONSIBILITY MATRIX', FOR ADDITIONAL INFORMATION.

**KEYED NOTES**

- 1. APPROXIMATE LOCATION OF BUILDING'S MAIN INCOMING VOICE/DATA SERVICE ENCLOSURE; REFER TO SHEET E401, DETAIL 'A1' - TELEPHONE / DATA RISER DIAGRAM, FOR ADDITIONAL INFORMATION.
- 2. REFER TO SHEET E-410 FOR EQUIPMENT LAYOUT WITHIN THESE ROOMS. REFER TO SHEET E-501 FOR 'POWER RISER DIAGRAM' FOR ADDITIONAL INFORMATION.
- 3. DOOR INDICATED SHALL BE 'ROUGHED-IN' (BOXES AND CONDUITS WITH PULLSTRING) BY ELECTRICAL CONTRACTOR. TO ALLOW FOR FACILITIES' SPECIAL SYSTEMS SUB-CONTRACTOR (APIC SOLUTIONS); ELECTRICAL CONTRACTOR SHALL COORDINATE EXACT BOX MOUNTING HEIGHTS (+42" A.F.F. TO BOTTOM OF BOX UNLESS OTHERWISE NOTED) AND LOCATIONS OF BOXES PRIOR TO ANY ELECTRICAL ROUGH-IN.
- 4. T.V. / MONITOR LOCATION: T.V. COAX / SIGNAL OUTLET MOUNTED ADJACENT TO WALL-MOUNTED POWER OUTLET AT APPROXIMATELY +6'-6" A.F.F. (OR AS REQUIRED SO THAT OUTLET AND CORDS ARE FULLY CONCEALED BEHIND T.V. MONITOR).
- 5. RECESSED-FLUSH-IN-SLAB FLOOR BOX WITH (2) RJ-45 CAT5 JACKS AND 1-1/4" CONDUIT WITH PULL-STRING ROUTED UNDER SLAB TO NEAREST FULL-HEIGHT INTERIOR WALL.
- 6. TELEPOWER POLE FOR CONNECTION TO MODULAR FURNITURE SYSTEMS. EACH WORKSTATION OF MODULAR FURNITURE SHALL BE PROVIDED WITH (1) RJ-45 CAT5 JACKS (2-VOICE AND 2-DATA PER OUTLET).
- 7. PROVIDE AND INSTALL DURESS BUTTON, MOUNTED TO UNDERSIDE OF DESK WORK SURFACE (OR AS DIRECTED BY ARCHITECTURAL PLANS, ELEVATIONS, DETAILS OR NOTES).
- 8. PROVIDE AND INSTALL A TWO-WAY THRU-WINDOW SPEAKER / INTERCOM SYSTEM, EQUAL TO RETEKSS #TW103. MAKE ALL REQUIRED CONNECTION FOR A COMPLETE AND OPERATIONAL SYSTEM. PROVIDE AND INSTALL DEDICATED 120V-15A POWER CIRCUIT INDICATED FOR POWER CONNECTION TO INTERCOM SYSTEM.
- 9. ELEVATOR CAR EQUIPPED WITH CCTV CAMERA AND ADA PHONE VIA SELF-CONTAINED CELLAR BASED VOIP SYSTEM. MAKE ALL REQUIRED CONNECTIONS FOR A COMPLETE AND OPERATIONAL SYSTEM. COORDINATE REQUIREMENTS WITH ELEVATOR VENDOR.
- 10. ELEVATOR SHALL BE OPERABLE BY ACCESS CONTROL / CARD READER ONLY. MAKE ALL REQUIRED CONNECTIONS FOR A COMPLETE AND OPERATIONAL SYSTEM. COORDINATE REQUIREMENTS WITH ELEVATOR VENDOR.
- 11. FIRE ALARM REMOTE ANNUNCIATOR PANEL; REFER TO SHEET E402, DETAIL 'D4' - FIRE ALARM RISER DIAGRAM, FOR ADDITIONAL INFORMATION.
- 12. ENGINE/GENERATOR STATUS ANNUNCIATOR PANEL (PROVIDED AS PART OF ENGINE/GENERATOR); REFER TO SHEET E501 - 'POWER RISER DIAGRAM', FOR ADDITIONAL INFORMATION.
- 13. PROVIDE AND INSTALL A 1-1/2" CONDUIT WITH PULLSTRING, FROM: FLOOR BOX LOCATION, TO: WALL-MOUNTED T.V. LOCATION. FOR HDMI CABLE (PROVIDED AND INSTALLED BY FACILITIES' SPECIAL SYSTEMS SUB-CONTRACTOR).
- 14. DOORS INDICATED SHALL BE ON TIME-CLOCK; THESE DOORS SHALL BE 'LOCKED' AFTER HOURS (LOCAL INSTANT OVERRIDE BY DOOR'S PANIC HARDWARE), AND SHALL BE 'UNLOCKED' DURING 'OPEN' HOURS. MAKE ALL REQUIRED CONNECTIONS FOR A COMPLETE AND OPERATIONAL SYSTEM.
- 15. DURING 'OPEN' HOURS, DOORS INDICATED SHALL BE CONTROLLED BY AUTOMATIC DOOR OPERATOR. PROVIDE AND INSTALL AUTOMATIC DOOR OPERATOR (INCLUDING ACTUATOR PUSH-BUTTONS, REX SENSOR, ETC.).
- 16. IP VIDEO DOOR BELL. PROVIDE AND INSTALL VIDEO DOOR STATION (EQUAL TO AIPHONE #IX-DV) AND VIDEO ANSWERING STATION (EQUAL TO AIPHONE #IX-MV7-B). MAKE ALL REQUIRED CONNECTIONS FOR A COMPLETE AND OPERATIONAL SYSTEM.
- 17. INTERCOM STATION(S) FOR 'VIDEO DOORBELL' LOCATED AT SECURE/SALLY-PORT GATE. REFER TO SHEET E601 (KEYED NOTE #8) FOR ADDITIONAL INFORMATION. MAKE ALL REQUIRED CONNECTIONS FOR A COMPLETE AND OPERATIONAL SYSTEM.
- 18. ALL CCTV CAMERA SIGNAL SHALL TERMINATE AT WALL-MOUNTED CCTV MONITOR LOCATIONS. OUTLET TO BE MOUNTED ADJACENT TO POWER OUTLET, AT 12" BELOW TO FINISHED CEILING ACT. REFER TO SHEET E402 - DETAIL 'A4' - 'CCTV SYSTEM RISER DIAGRAM' FOR ADDITIONAL INFORMATION.

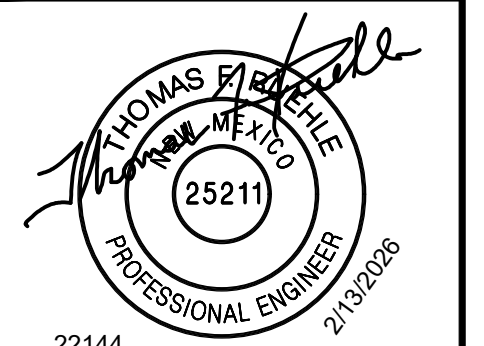


1306 RIO GRANDE BLVD NW  
ALBUQUERQUE, NM 87104  
505-255-6400 505-268-6954 FAX  
WWW.NCA-ARCHITECTS.COM



6705 Academy Rd. NE, Suite B  
Albuquerque, New Mexico 87109  
Phone: (505) 323-7629 Fax: (505) 323-7594  
Email: theresponsegroup@trg-inc.net

CONSULTANT



PROJECT TITLE  
**SANTA FE  
MAGISTRATE  
COURTHOUSE**

SANTA FE  
NEW MEXICO

REVISIONS:

MK	DATE	DESCRIPTION
	4/17/26	ADDENDA 01

DRAWN BY: TRG / msp CHECKED BY: TRG / tfr

PROJECT NUMBER:  
A22.07

DATE:  
02.13.2026

SHEET TITLE:  
**SPECIAL SYSTEMS  
PLAN - GRADE LEVEL**

SHEET NO:  
**E301**

SHEET NO:  
**E301**

02.13.2026 - ISSUED FOR PERMIT







E

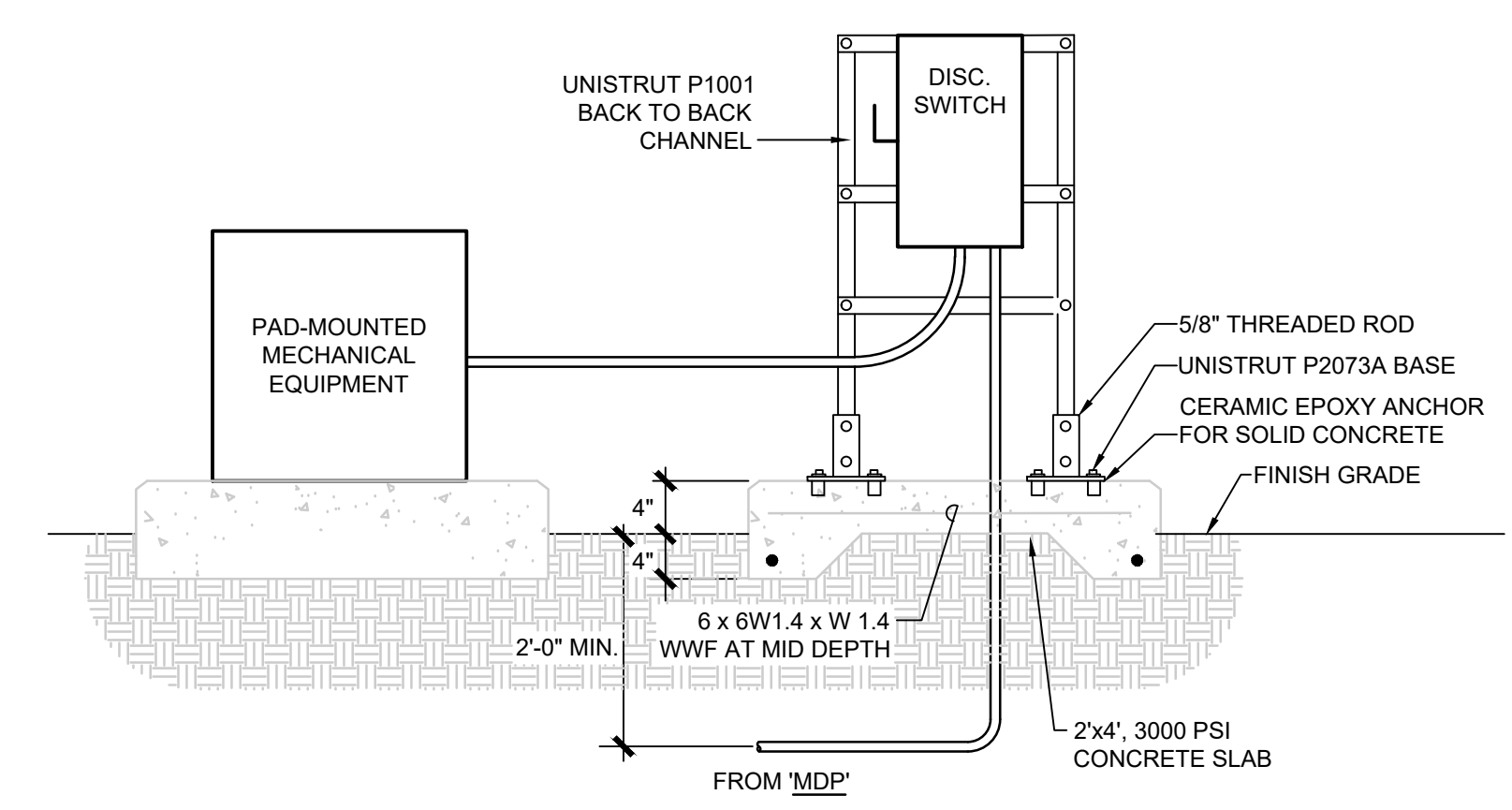
D

C

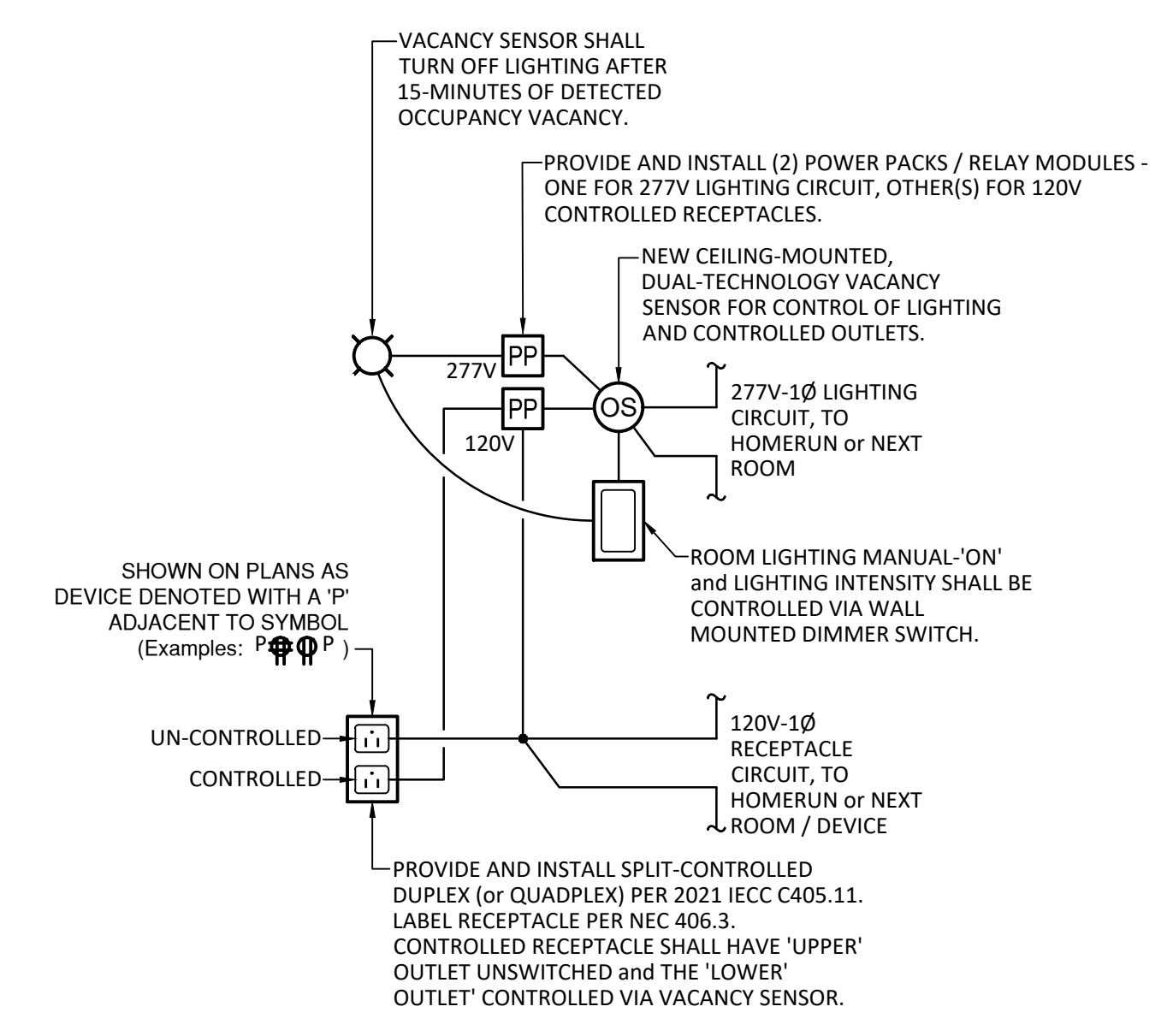
B

A

Special Systems - Responsibility Matrix						
Special System	Work Item / Description	Provided by Electrical Contractor	Installed by Electrical Contractor	Provided and Installed by APC	Provided by APC	Installed in Ductwork by Mechanical
Voice / Data	Boxes and Conduit with Pull-Strings	•	•			
Voice / Data	Outlet Device and Faceplate			•		
Voice / Data	CAT5e Wiring and Terminations			•		
Voice / Data	Floor Boxes	•	•			
Voice / Data	Labeling and Identification			•		
Fire Alarm	Boxes and Conduit with Pull-Strings	•	•			
Fire Alarm	Fire Alarm Device and Faceplate			•		
Fire Alarm	Fire Alarm Wiring and Terminations			•		
Fire Alarm	Main Fire Alarm Control Panel & Annunciator Panel			•		
Fire Alarm	120V-Single Phase Power to FACP and FAAP	•	•			
Fire Alarm	Fire Alarm Device and Faceplate			•		
Fire Alarm	Fire Alarm Wiring, Terminations and System Programming			•		
Fire Alarm	Labeling and Identification			•		
Fire Alarm	AHU Shutdown, FSDamper			•	•	•
Access Control	Head-end Equipment			•		
Access Control	120V-Single Phase Power to Head-End	•	•			
Access Control	Boxes and Conduit with Pull-Strings	•	•			
Access Control	A/C Door Hardware Devices, Wiring, Terminations and System Programming			•		
Access Control	Labeling and Identification			•		
CCTV	Head-end Equipment			•		
CCTV	120V-Single Phase Power to Head-End	•	•			
CCTV	Boxes and Conduit with Pull-Strings	•	•			
CCTV	CCTV Device, Enclosure, Cabling, Terminations and System Programming			•		
CCTV	Labeling and Identification			•		
Security	Duress Button - Boxes and Conduit with Pull-String	•	•			
Security	Duress Button - Device, Cabling, Terminations			•		
Video Intercom	Sheet E001, KN#8: Boxes and Conduit with Pull-String	•	•			
Video Intercom	Sheet E001, KN#8: Device, Cabling, Terminations			•		
Gate Controller	Sheet E001, KN#9a: Boxes and Conduit with Pull-String	•	•			
Gate Controller	Sheet E001, KN#9a: Device, Cabling, Terminations			•		
Gate Controller	Power to Gate Controller	•	•			
Thru-Window Intercom	Sheet E301, KN#8: Boxes and Conduit with Pull-String	•	•			
Thru-Window Intercom	Sheet E301, KN#8: Device, Cabling, Terminations			•		
Thru-Window Intercom	Power to Intercom System	•	•			
Video Doorbell	Sheet E301, KN#16: Boxes and Conduit with Pull-String	•	•			
Video Doorbell	Sheet E301, KN#16: Device, Cabling, Terminations			•		
Video Doorbell	Power to Video Doorbell System	•	•			

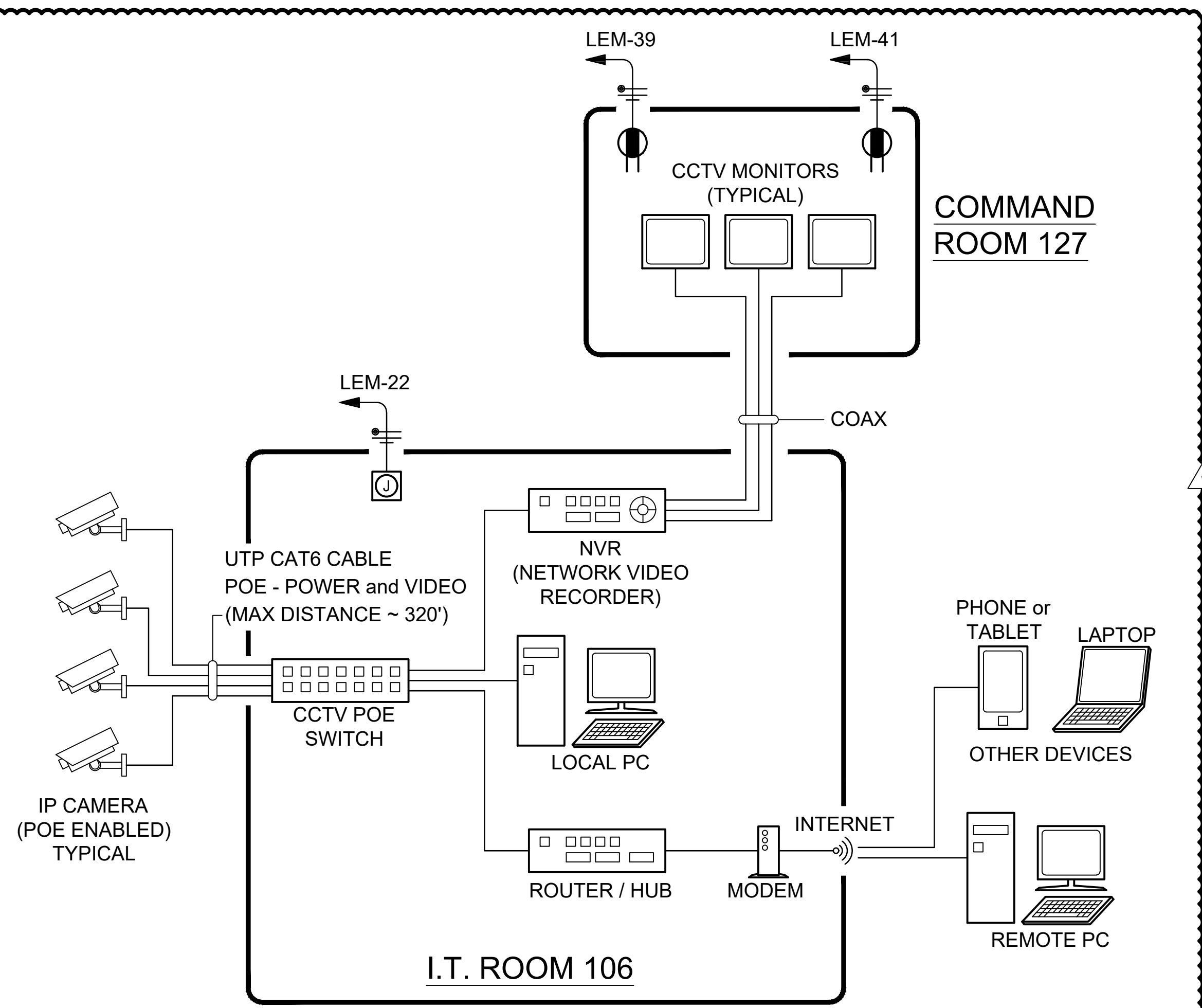


**E4** RACK-MOUNTED DISCONNECT SWITCH DETAIL  
NO SCALE



SEQUENCE OF OPERATION:  
PERSON ENTERS ROOM; CEILING MOUNTED VACANCY SENSOR AUTOMATICALLY TURNS ON CONTROLLED-RECEPTACLE, BUT OCCUPANT MUST MANUALLY OPERATE WALL-MOUNTED ON/OFF DIMMER SWITCH, IN ORDER TO TURN ON ROOM LIGHTING.  
AS LONG AS OCCUPANCY IS SENSED VIA CEILING-MOUNTED SENSOR, ROOM LIGHTING WILL REMAIN 'ON' (AT LEVEL SET BY WALL MOUNTED DIMMER SWITCH) AND CONTROLLED-RECEPTACLE SHALL BE 'ON'  
SUBSEQUENTLY, PERSON LEAVES ROOM. AFTER 15-MINUTES, VACANCY SENSOR WILL AUTOMATICALLY TURN 'OFF' LIGHTING AND CONTROLLED-RECEPTACLE.

**C4** CONTROL DIAGRAM: VACANCY SENSOR CONTROL FOR LIGHTS AND PLUG LOADS  
NOT TO SCALE



**A4** CCTV SYSTEM RISER DIAGRAM  
No Scale

**GENERAL NOTES**  
A. REFER TO SHEET E-601 FOR ELECTRICAL SYMBOL LEGEND AND PROJECT GENERAL NOTES.

**KEYED NOTES**  
1. XXX

**NCA**  
ARCHITECTS - PLANNERS - AIA

1306 RIO GRANDE BLVD NW  
ALBUQUERQUE, NM 87104  
505-255-6400 505-268-6954 FAX  
WWW.NCA-ARCHITECTS.COM

ARCHITECT

**THE RESPONSE GROUP, INC.**  
20 Years of Professional Experience

6705 Academy Rd. NE, Suite B  
Albuquerque, New Mexico 87109  
Phone: (505) 323-7629 Fax: (505) 323-7594  
Email: theresponsegroup@trg-inc.net

CONSULTANT

**THOMAS P. TRIGG**  
Professional Engineer  
2103/008  
22144

PROJECT TITLE  
**SANTA FE MAGISTRATE COURTHOUSE**

SANTA FE NEW MEXICO

REVISIONS:

MK	DATE	DESCRIPTION
	4/17/26	ADDENDA 01

DRAWN BY: TRG / msp CHECKED BY: TRG / tfr

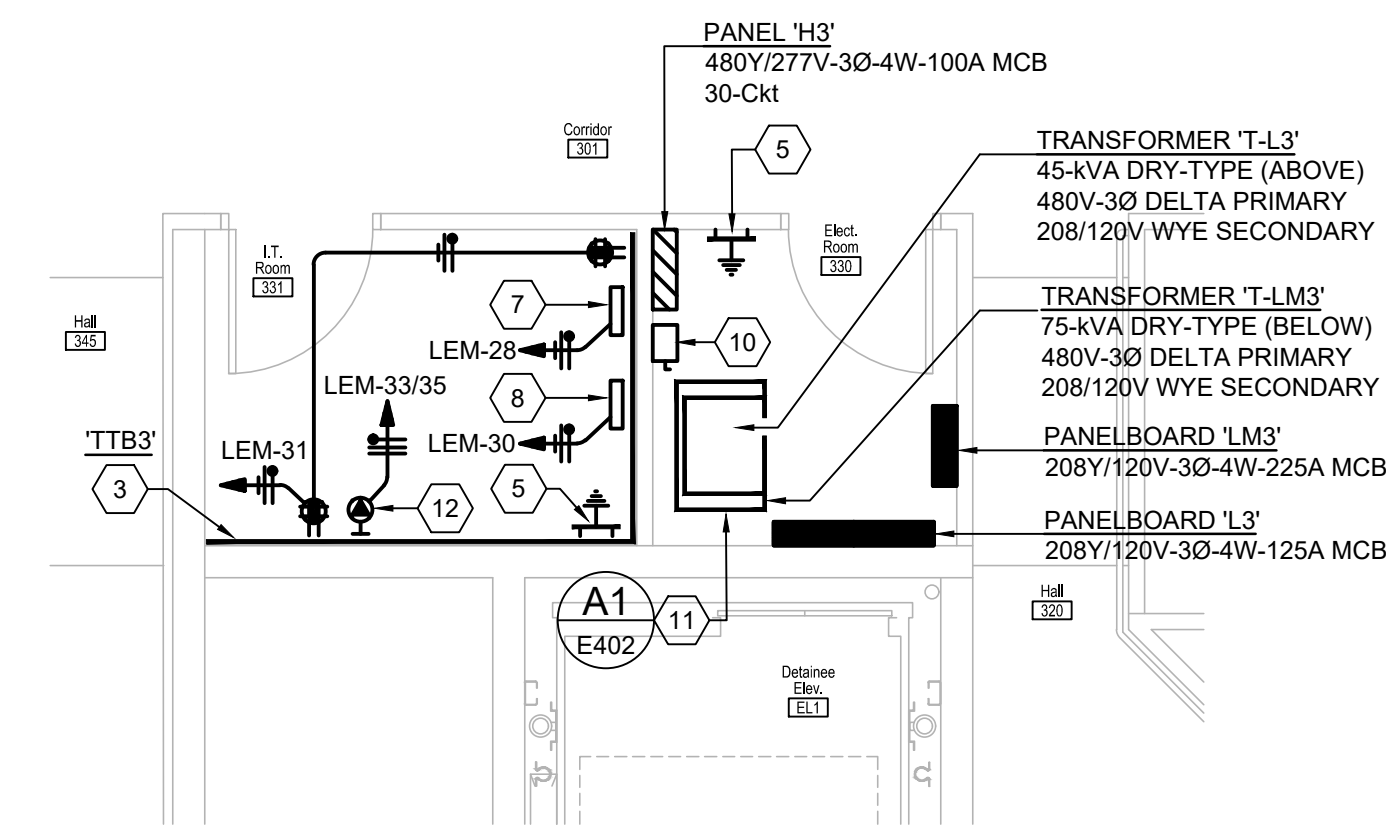
PROJECT NUMBER: A22.07

DATE: 02.13.2026

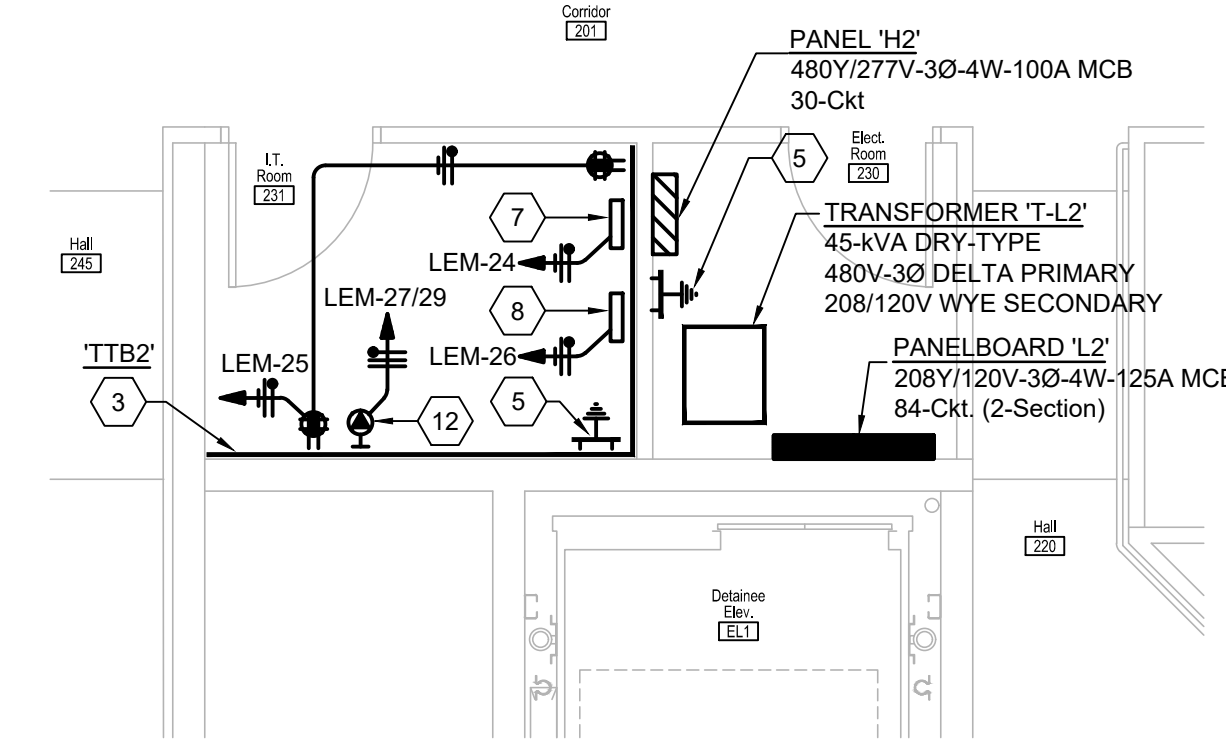
SHEET TITLE: **ELECTRICAL DETAILS AND DIAGRAMS**

SHEET NO: **E403**

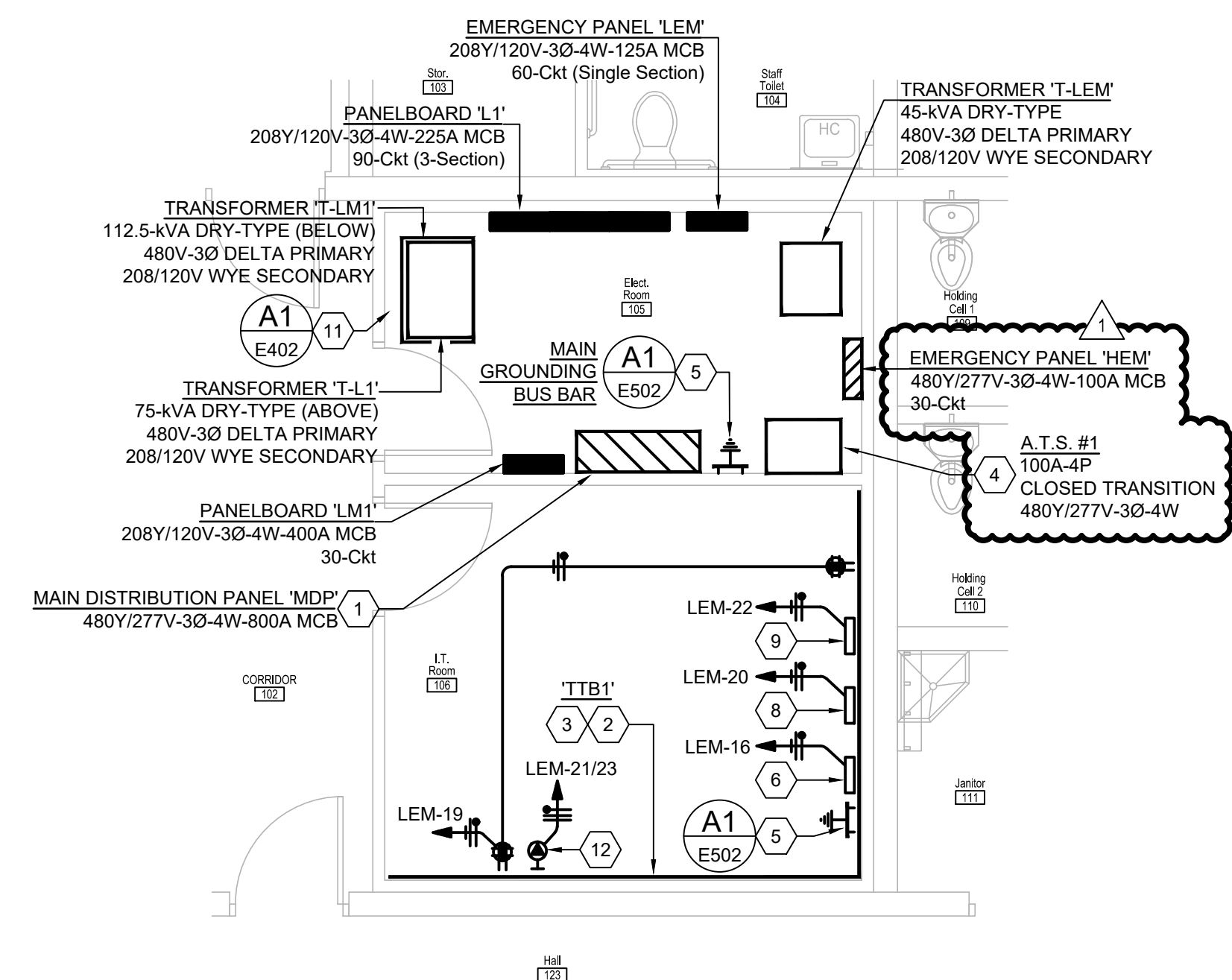
02.13.2026 - ISSUED FOR PERMIT



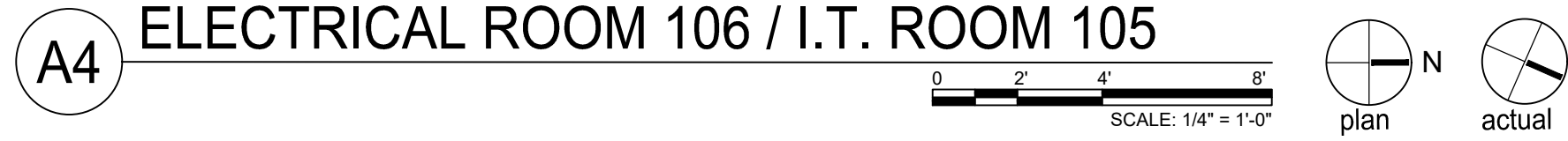
**ENLARGED ELECTRICAL PLAN - 3rd FLOOR**  
**I.T. ROOM 328 / ELECTRICAL ROOM 327**



**ENLARGED ELECTRICAL PLAN - 2nd FLOOR**  
**I.T. ROOM 228 / ELECTRICAL ROOM 227**



**ENLARGED ELECTRICAL PLAN - 1st FLOOR**  
**ELECTRICAL ROOM 106 / I.T. ROOM 105**



**GENERAL NOTES**

A. REFER TO SHEET E601 FOR ELECTRICAL SYMBOL LEGEND AND PROJECT GENERAL NOTES.

**SPECIAL SYSTEMS NOTE**

- A. 'SPECIAL SYSTEMS' WORK SHALL CONSIST OF THE FOLLOWING:
- FIRE ALARM SYSTEM
  - VOICE / DATA NETWORKING
  - ACCESS CONTROL
  - CCTV
  - SECURITY DURESS BUTTONS
  - VIDEO DOOR BELL SYSTEMS
  - THRU-WINDOW INTERCOM SYSTEM
  - GATE CONTROLLERS and CONTROL
- B. THE COURT'S SPECIAL SYSTEM SUB-CONTRACTOR SHALL BE APIC SOLUTIONS, 401 SNAPPOLL ST. NE, ALBUQUERQUE, NEW MEXICO 87109. (505) 345-1381. APIC SOLUTIONS SHALL BE A SUB-CONTRACTOR TO ELECTRICAL CONTRACTOR.
- C. DURING BIDDING PROCESS, APIC SOLUTIONS SHALL PROVIDE A BID LINE-ITEM FOR THEIR LABOR AND MATERIAL COSTS. THIS BID LINE-ITEM SHALL BE UTILIZED BY ALL ELECTRICAL CONTRACTORS BIDDING THIS PROJECT.
- D. ALL WORK ON 'SPECIAL SYSTEMS' SHALL BE PERFORMED BY APIC SOLUTIONS; ELECTRICAL CONTRACTOR SHALL PROVIDE BOXES AND CONDUIT (3/4\"/>

E. REFER TO SHEET E403 - 'SPECIAL SYSTEMS - RESPONSIBILITY MATRIX'. FOR ADDITIONAL INFORMATION.

**KEYED NOTES**

1. NEW MAIN DISTRIBUTION PANELBOARD 'MDP', LOCATED IN MAIN ELECTRICAL PLAN.
2. NEW MAIN TELEPHONE TERMINAL BACKBOARD 'TTB'.
3. WALLS INDICATED SHALL BE PROVIDED WITH 4' x 8' x 3/4\"/>

**NCA**  
 ARCHITECTS - PLANNERS - AIA

1306 RIO GRANDE BLVD NW  
 ALBUQUERQUE, NM 87104  
 505-255-6400 505-268-6954 FAX  
 WWW.NCA-ARCHITECTS.COM

ARCHITECT

**THE RESPONSE GROUP, INC.**  
 6705 Academy Rd. NE, Suite B  
 Albuquerque, New Mexico 87109  
 Phone: (505) 323-7629 Fax: (505) 323-7594  
 Email: thereponsegroup@rtrg-inc.net

CONSULTANT

**THOMAS J. LEWIS**  
 PROFESSIONAL ENGINEER  
 23211  
 2/13/2026  
 22144

PROJECT TITLE

**SANTA FE  
 MAGISTRATE  
 COURTHOUSE**

SANTA FE  
 NEW MEXICO

REVISIONS:

NO.	DATE	DESCRIPTION
1	4/17/26	ADDENDA 01

DRAWN BY: TRG / msp CHECKED BY: TRG / tfr

PROJECT NUMBER: A22.07

DATE: 02.13.2026

SHEET TITLE: ENLARGED ELECTRICAL PLANS

SHEET NO: E410

02.13.2026 - ISSUED FOR PERMIT



PANEL SCHEDULE - NEW PANEL "L1"												
LOCATION: MAIN ELECTRICAL RM - Ground VOLTAGE: 208Y/120V-3PH, 4Wire AMPACITY: 400A Main: 300A/3P MCB												
FED FROM: MDP 200A/3P (Thru 112.5kVA T-L1) ENCLOSURE: NEMA 1 MOUNTING: Surface A/C: tbd												
BKR SIZE	DESCRIPTION	DEMAND CODE	LOAD (VA)			DEMAND CODE	DESCRIPTION	BKR SIZE				
			PHASE A	PHASE B	PHASE C							
20A-1P	LTG - ELEVATOR 1 - RT / SHAF LTG	LTG	860	1	1940	2	1080 REC	RECP - ELEC. IT. FIRE RISER	20A-1P			
20A-1P	LTG - ELEVATOR 2 - RT / SHAF LTG	LTG	860	3		4	720 REC	RECP - SECURE STOR. STP TLT	20A-1P			
20A-1P	LTG - ELEVATOR 3 - RT / SHAF LTG	LTG	860	5		6	720 REC	RECP - SALLY PORT	20A-1P			
20A-1P	RECP - FILE ROOM 116	REC	720	7	1470	8	750 EQP	EQP - VENDING - BREAK RM 145	20A-1P			
20A-1P	RECP - AG CHEVES 117, RES TRMS	REC	900	9	1650	10	750 EQP	EQP - VENDING - BREAK RM 145	20A-1P			
20A-1P	RECP - COOR. STRT. STAFF VEST	REC	1080	11		12	750 EQP	EQP - REFRIG - BREAK RM 145	20A-1P			
20A-1P	RECP - STAFF BREAK 145	REC	720	13	2220	14	1500 EQP	EQP - WMO - BREAK RM 145	20A-1P			
20A-1P	RECP - STAFF BREAK 145 COUNTER	REC	1200	15		16	1080 REC	RECP - MOD FURN - CLERK 138	20A-1P			
20A-1P	RECP - INTERPR OFFICE 142	REC	900	17	1980	18	1080 REC	RECP - MOD FURN - CLERK 138	20A-1P			
20A-1P	EQP - ROLL UP DOOR - SALLYPORT	EQP	695	19	1775	20	1080 REC	RECP - MOD FURN - CLERK 138	20A-1P			
20A-1P	EQP - ROLL UP DOOR - SALLYPORT	EQP	695	21		22	1080 REC	RECP - MOD FURN - CLERK 138	20A-1P			
20A-1P	EQP - ROLL UP DOOR - SALLYPORT	EQP	695	23	1775	24	1080 REC	RECP - MOD FURN - CLERK 138	20A-1P			
20A-1P	EQP - ROLL UP DOOR - SALLYPORT	EQP	695	25	1775	26	1080 REC	RECP - MOD FURN - CLERK 138	20A-1P			
20A-3P	MECH - FCUs - 1st FLOOR	MECH	1325	27	2405	28	1080 REC	RECP - MOD FURN - CLERK 138	20A-1P			
20A-3P	MECH - FCUs - 1st FLOOR	MECH	1325	29	2405	30	1080 REC	RECP - MOD FURN - CLERK 138	20A-1P			
20A-3P	MECH - FCUs - 1st FLOOR	MECH	755	31	1835	32	1080 REC	RECP - MOD FURN - CLERK 138	20A-1P			
20A-3P	MECH - FCUs - 1st FLOOR	MECH	755	33		34	500 MECH	MECH - MCLs	20A-2P			
20A-3P	MECH - FCUs - 1st FLOOR	MECH	925	35	1255	36	500 MECH	MECH - MCLs	20A-2P			
20A-3P	MECH - FCUs - 1st FLOOR	MECH	925	37	8905	38	760 LMECH	MECH - HP-2a	80A-3P			
20A-3P	MECH - FCUs - 1st FLOOR	MECH	625	39	8305	40	760 LMECH	MECH - HP-2b	80A-3P			
20A-1P	RECP - HALL 125 JANIT 111	REC	720	41	1800	42	1080 REC	RECP - CLERK 138	20A-1P			
20A-1P	RECP - TRAVEL HEARD OFF 128	REC	1200	43	1980	44	720 REC	RECP - CLERK DESK 139	20A-1P			
20A-1P	RECP - WORK ROOM 135	REC	900	47	2280	48	720 REC	RECP - CLERK DESK 139	20A-1P			
20A-1P	EQP - COOPER - WORK ROOM 135	EQP	1200	49	2280	50	1080 REC	RECP - PRE-TRAIL OFFICE 147	20A-1P			
20A-1P	EQP - COOPER - WORK ROOM 135	EQP	1200	51	2100	52	900 REC	RECP - COURT MGR. 144	20A-1P			
20A-1P	RECP - MONITORS - HEARING 129	REC	720	53		54	900 REC	RECP - HALL 150	20A-1P			
20A-1P	RECP - ENTRY - WITNESS - HEARING 129	REC	360	55	1620	56	1200 REC	RECP - ENTRY HALL 156, 159	20A-1P			
20A-1P	RECP - JUDGE - HEARING 129	REC	720	57	1620	58	900 REC	RECP - LOBBY 157, 158, 159	20A-1P			
20A-1P	RECP - CLERK - HEARING 129	REC	720	59		60	900 REC	RECP - PUBLIC RR 152, 153	20A-1P			
20A-1P	EQP - COOPER - HEARING 129	EQP	750	61	1500	62	750 EQP	EQP - ELEV. C. ELEV LOBBY 151	20A-1P			
20A-1P	RECP - FLOOR PWR - HEARING 129	REC	540	63	1290	64	750 EQP	EQP - VENDING - ELEV LOBBY 151	20A-1P			
20A-1P	RECP - PUBLIC SEATING 130	REC	720	65	1470	66	750 EQP	EQP - VENDING - ELEV LOBBY 151	20A-1P			
20A-1P	RECP - COOP 136	REC	1080	67	1280	68	200 EQP	EQP - KIOSK - HALL 150	20A-1P			
20A-1P	RECP - DRUG COURT 137	REC	900	69	1800	70	900 REC	RECP - COOP 131	20A-1P			
20A-1P	EQP - VIDEO DOORBELL - BRK 145	EQP	500	71	800	72	360 REC	RECP - SELF-HELP 133	20A-1P			
20A-1P	EQP - AUDIO DOOR - ENTRY 138	EQP	500	73	1000	74	300 EQP	EQP - VIDEO DOORBELL - GATE 20A-1P	20A-1P			
20A-1P	EQP - EXTR LIGHTING CONTROLLER	EQP	200	75	950	76	750 MECH	MECH - EXTR IT. FIRE RISER 101	20A-1P			
20A-1P	RECP - EXTR POLE MOUNTED	REC	720	77	4220	78	3500 EQP	EQP - E.V. CHARGER	40A-2P			
20A-1P	MECH - ELEV PT SLUMP SPT / SPTA	MECH	696	79	4196	80	3500 EQP	EQP - E.V. CHARGER	40A-2P			
20A-1P	MECH - ELEV PT SLUMP SPT / SPTA	MECH	696	81	4196	82	3500 EQP	EQP - E.V. CHARGER	40A-2P			
20A-1P	MECH - ELEV PT SLUMP SPT / SPTA	MECH	696	83	4196	84	3500 EQP	EQP - E.V. CHARGER	40A-2P			
20A-1P	LTG - ELEVATOR CAL LIGHTS PAN	LTG	120	85	1200	86	1200 REC	SPRACE ONLY	1P			
20A-1P	EQP - IRRIGATION CONTROLLER	EQP	200	87		88		SPRACE ONLY	1P			
20A-1P	SPRACE ONLY					90		SPRACE ONLY	1P			

Total Phase Loads (VA): 34,496 | 33,386 | 34,908  
 Total Phase Loads (Amps): 297.5 | 276.2 | 290.9  
 Total Connected Loads (kVA): 102.8

Notes: 1. New Panelboard  
 2. 90-Circuit (3-Section)  
 3. Copper Neutral and Ground Bus Bars  
 4. Door-in-Door Enclosure.

LOAD CALCULATIONS - NEW PANEL "L1"		
Connected (kVA) by Type:	Estimated Demand (kVA) by Type:	Total Estimated Demand (kVA)
LTG Lighting: 3.8	Lighting at 125% (kVA): 4.7	96.1
REC Receptacles: 36.8	Receptacles: 20.7 @ 208Y/120V-3 Phase (Amps)	266.9
	10kVA at 100% (kVA): 10.0	Panel Ampacity (Rating): 300
	Rest at 50% (kVA): 13.4	
	Eq at 100% (kVA): 28.0	Spare Capacity: 11.0%
EQP Equipment: 28.0	Largest at 125% (kVA): 28.8	
LMECH Largest Mech: 23.0	Rest at 100% (kVA): 11.1	
MECH Mechanical: 11.1		

PANEL SCHEDULE - NEW PANEL "LM1" (Mechanical Loads)												
LOCATION: MAIN ELECTRICAL RM - Ground VOLTAGE: 208Y/120V-3PH, 4Wire AMPACITY: 400A Main: 400A MCB												
FED FROM: MDP 200A/3P (Thru 112.5kVA T-L1) ENCLOSURE: NEMA 1 MOUNTING: Surface A/C: tbd												
BKR SIZE	DESCRIPTION	DEMAND CODE	LOAD (VA)			DEMAND CODE	DESCRIPTION	BKR SIZE				
			PHASE A	PHASE B	PHASE C							
60A-3P	MECH - HP-1a	MECH	4900	1	12580	2	7680 LMECH	MECH - HP-2a	80A-3P			
60A-3P	MECH - HP-1a	MECH	4900	3	12580	4	7680 LMECH	MECH - HP-2a	80A-3P			
60A-3P	MECH - HP-1a	MECH	4900	5	12580	6	7680 LMECH	MECH - HP-2a	80A-3P			
75A-3P	MECH - HP-1b	MECH	6530	7	14210	8	7680 MECH	MECH - HP-2b	80A-3P			
75A-3P	MECH - HP-1b	MECH	6530	9	14210	10	7680 MECH	MECH - HP-2b	80A-3P			
75A-3P	MECH - HP-1b	MECH	6530	11	14210	12	7680 MECH	MECH - HP-2b	80A-3P			
80A-3P	MECH - HP-1c	MECH	7200	13	14880	14	7680 MECH	MECH - HP-3a	80A-3P			
80A-3P	MECH - HP-1c	MECH	7200	15	14880	16	7680 MECH	MECH - HP-3a	80A-3P			
80A-3P	MECH - HP-1c	MECH	7200	17	14880	18	7680 MECH	MECH - HP-3a	80A-3P			
1P	SPRACE ONLY			19		20		SPRACE ONLY	1P			
1P	SPRACE ONLY			21		22		SPRACE ONLY	1P			
1P	SPRACE ONLY			23		24		SPRACE ONLY	1P			
1P	SPRACE ONLY			25		26		SPRACE ONLY	1P			
1P	SPRACE ONLY			27		28		SPRACE ONLY	1P			
1P	SPRACE ONLY			29		30		SPRACE ONLY	1P			

Total Phase Loads (VA): 41,670 | 41,670 | 41,670  
 Total Phase Loads (Amps): 347.3 | 347.3 | 347.3  
 Total Connected Loads (kVA): 125.0

Notes: 1. New Panelboard  
 2. 84-Circuit  
 3. Copper Neutral and Ground Bus Bars  
 4. Door-in-Door Enclosure.

LOAD CALCULATIONS - NEW PANEL "LM1"		
Connected (kVA) by Type:	Estimated Demand (kVA) by Type:	Total Estimated Demand (kVA)
LTO Lighting: 0.0	Lighting at 125% (kVA): 0.0	130.8
REC Receptacles: 0.0	Receptacles: 0.0 @ 208Y/120V-3 Phase (Amps)	363.3
	10kVA at 100% (kVA): 0.0	Panel Ampacity (Rating): 400
	Rest at 50% (kVA): 0.0	
	Eq at 100% (kVA): 0.0	Spare Capacity: 9.2%
EQP Equipment: 0.0	Largest at 125% (kVA): 0.0	
LMECH Largest Mech: 23.0	Rest at 100% (kVA): 102.0	
MECH Mechanical: 102.0		

PANEL SCHEDULE - NEW EMERGENCY PANEL "HEM"												
LOCATION: MAIN ELECTRICAL RM - Ground VOLTAGE: 480Y/277V-3PH, 4Wire AMPACITY: 100A Main: 100A/3P MCB												
FED FROM: A.T.S. #1 ENCLOSURE: NEMA 3R MOUNTING: Surface A/C: tbd												
BKR SIZE	DESCRIPTION	DEMAND CODE	LOAD (VA)			DEMAND CODE	DESCRIPTION	BKR SIZE				
			PHASE A	PHASE B	PHASE C							
20A-1P	LTG - EM/ EGRESS - STAIRWAYS	LTG	1380	1	2482	2	1080 REC	LTG - EM/ EGRESS - GROUND LVL	20A-1P			
20A-1P	LTG - EM/ EGRESS - 2nd LEVEL	LTG	1548	3		4	1631 LTG	LTG - EM/ EGRESS - GROUND LVL	20A-1P			
20A-1P	LTG - EM/ EGRESS - 3rd LEVEL	LTG	1605	5		6	1200 LTG	LTG/FIRE/ ELEVATORS	20A-1P			
20A-1P	SPARE					7		SPARE	20A-1P			
20A-1P	SPARE					8		SPARE	20A-1P			
20A-1P	SPARE					9		SPARE	20A-1P			
20A-1P	SPARE					10		SPARE	20A-1P			
20A-1P	SPARE					11		SPARE	20A-1P			
20A-1P	SPARE					12		SPARE	20A-1P			
20A-1P	SPARE					13		SPARE ONLY	1P			
20A-1P	SPARE					14		SPARE ONLY	1P			
20A-1P	SPARE					15		SPARE ONLY	1P			
20A-1P	SPARE					16		SPARE ONLY	1P			
20A-1P	SPARE					17		SPARE ONLY	1P			
20A-1P	SPARE					18		SPARE ONLY	1P			
20A-1P	SPARE					19		SPARE ONLY	1P			
20A-1P	SPARE					20		SPARE ONLY	1P			
20A-1P	SPARE					21		SPARE ONLY	1P			
20A-1P	SPARE					22		SPARE ONLY	1P			
20A-1P	SPARE					23		SPARE ONLY	1P			
20A-1P	SPARE					24		SPARE ONLY	1P			
20A-1P	SPARE					25	10,540 SUB	SUBFEED - PANEL LEM (THRU 45kVA TRANSFORMER T-LEM)	80A-3P			
20A-1P	SPARE					26	15,960 SUB					
20A-1P	SPARE					27	15,960 SUB					
20A-1P	SPARE					28	15,960 SUB					
20A-1P	SPARE					29	15,960 SUB					

Total Phase Loads (VA): 13,002 | 19,137 | 17,885  
 Total Phase Loads (Amps): 46.9 | 69.1 | 64.6  
 Total Connected Loads (kVA): 50.0

Notes: 1. New Panelboard  
 2. 30-Circuit  
 3. Copper Neutral and Ground Bus Bars  
 4. Door-in-Door Enclosure.

LOAD CALCULATIONS - NEW PANEL "HEM"		
Connected (kVA) by Type:	Estimated Demand (kVA) by Type:	Total Estimated Demand (kVA)
LTG Lighting: 8.4	Lighting at 125% (kVA): 10.6	48.8
REC Receptacles: 20.7	Receptacles: 20.7 @ 480Y/277V-3 Phase (Amps)	56.3
	10kVA at 100% (kVA): 10.0	Panel Ampacity (Rating): 100
	Rest at 50% (kVA): 5.3	
	Eq at 100% (kVA): 20.9	Spare Capacity: 43.7%
EQP Equipment: 20.9	Largest at 125% (kVA): 20.9	
LMECH Largest Mech: 0.0	Rest at 100% (kVA): 0.0	
MECH Mechanical: 0.0		

PANEL SCHEDULE - NEW EMERGENCY PANEL "LEM"												
LOCATION: MAIN ELECTRICAL RM - Ground VOLTAGE: 208Y/120V-3PH, 4Wire AMPACITY: 125A Main: 125A/3P MCB												
FED FROM: MDP 80A/3P (Thru 45kVA T-LEM) ENCLOSURE: NEMA 3R MOUNTING: Surface A/C: tbd												
BKR SIZE	DESCRIPTION	DEMAND CODE	LOAD (VA)			DEMAND CODE	DESCRIPTION	BKR SIZE				
			PHASE A	PHASE B	PHASE C							
20A-1P	EQP - FIS DAMPERS - 1st FLR	EQP	1200	1	2400	2	1200 EQP	EQP - FIS DAMPERS - 2ND FLR	20A-1P			
20A-1P	EQP - FIS DAMPERS - 1st FLR	EQP	800	3	2200	4	1400 EQP	EQP - FIS DAMPERS - 2ND FLR	20A-1P			
20A-1P	EQP - FIS DAMPERS - 3rd FLR	EQP	1000	5	1800	6	1000 EQP	EQP - FIS DAMPERS - 2ND FLR	20A-1P			
20A-1P	EQP - FIS DAMPERS - 3rd FLR	EQP	1200	7	2400	8		SPARE	20A-1P			
20A-1P	EQP - FIS DAMPERS - 3rd FLR	EQP	1200	9		10			20A-1P			
20A-1P	EQP - FIS DAMPERS - 3rd FLR	EQP	1200	11	2080	12	1080 REC	RECP - 1st FLR SECURE GUARD 108	20A-1P			
20A-1P	RECP - 2nd FLR - GUARD 236	REC	360	13	1080	14	720 REC	RECP - 1st FLR - CONTROL RM 127	20A-1P			
20A-1P	RECP - 3rd FLR - GUARD 236	REC	360	15	860	16	500 EQP	EQP - FACP - IT. 106	20A-1P			
20A-1P	EQP - EIG REMOTE ANNUNCTR	EQP	200	17	700	18	500 EQP	EQP - FAAP - ENTRY HALL 156	20A-1P			
20A-1P	RECP - IT. ROOM 108	REC	720	19	1220	2						



**CSI Form 1.5C**

**SUBSTITUTION  
REQUEST  
(During the Bid Period)**

Project: Santa Fe Magistrate Substitution Request Number: \_\_\_\_\_

From: Bob Tayson / Sto Corp

To: NCA Architects

Date: 4/21/26

A/E Project Number: A22.07

Re: Substitution

Contract For: Portland Cement Stucco

Specification Title: Portland Cement Stucco

Description: PX Armourwall Watermaster DM and others

Section: 092400 Page: \_\_\_\_\_

Article/Paragraph: 2.1-2.2

Proposed Substitution: StoPowerwall Drainscreen

Manufacturer: Sto Corp Address: Atlanta, GA Phone: 541-441-0233

Trade Name: StoPowerwall Model No.: \_\_\_\_\_

Attached data includes product description, specifications, drawings, photographs, and performance and test data adequate for evaluation of the request; applicable portions of the data are clearly identified.

Attached data also includes a description of changes to the Contract Documents that the proposed substitution will require for its proper installation.

The Undersigned certifies:

- Proposed substitution has been fully investigated and determined to be equal or superior in all respects to specified product.
- Same warranty will be furnished for proposed substitution as for specified product.
- Same maintenance service and source of replacement parts, as applicable, is available.
- Proposed substitution will have no adverse effect on other trades and will not affect or delay progress schedule.
- Proposed substitution does not affect dimensions and functional clearances.
- Payment will be made for changes to building design, including A/E design, detailing, and construction costs caused by the substitution.

Submitted by: Bob Tayson

Signed by: Bob Tayson

Firm: Sto Corp

Address: 3800 Camp Creek pkwy, Atlanta, Ga

Telephone: 541-441-0233

**A/E's REVIEW AND ACTION**

- Substitution approved - Make submittals in accordance with Specification Section 01 25 00 Substitution Procedures.
- Substitution approved as noted - Make submittals in accordance with Specification Section 01 25 00 Substitution Procedures.
- Substitution rejected - Use specified materials.
- Substitution Request received too late - Use specified materials.

Signed by: \_\_\_\_\_

Date: \_\_\_\_\_

Supporting Data Attached:  Drawings  Product Data  Samples  Tests  Reports  \_\_\_\_\_

**SECTION 09 2400  
PORTLAND CEMENT PLASTER, 3 COAT STUCCO**

**PART 1 - GENERAL**

**1.1 SECTION INCLUDES**

- A. Supply and Installation of a three-coat stucco assembly with crack suppression and an acrylic based finish over a fluid applied air and weather barrier, drainage mat and continuous insulation.

**1.2 RELATED SECTIONS**

- A. Section 03 30 00 - Cast-in-Place Concrete
- B. Section 04 20 00 - Unit Masonry
- C. Section 06 16 00 - Sheathing
- D. Section 07 25 00 - Weather Barriers
- E. Section 07 62 00 - Sheet Metal Flashing and Trim
- F. Section 07 90 00 - Joint Protection
- G. Section 08 50 00 - Windows
- H. Section 09 21 16 - Gypsum Board Assemblies

**1.3 REFERENCES**

- A. ASTM C144 - Standard Specification for Aggregate for Masonry Mortar
- B. ASTM C578 - Specification for Preformed, Cellular Polystyrene Thermal Insulation
- C. ASTM C847 - Standard Specification for Metal Lath
- D. ASTM C897 - Standard Specification for Aggregate for Job-Mixed Portland Cement-Based Plaster
- E. ASTM C926 - Standard Specification for Application of Portland Cement-Based Plaster
- F. ASTM C933 - Standard Specification for Welded Wire Lath
- G. ASTM C1032 - Standard Specification for Woven Wire Plaster Base
- H. ASTM C1063 - Standard Specification for Installation of Lathing and Furring for Portland Cement Based Plaster
- I. ASTM C1177 - Specification for Glass Mat Gypsum for Use as Sheathing
- J. ASTM C1278 - Specification for Fiber-Reinforced Gypsum Panel
- K. ASTM C1396 - Standard Specification for Gypsum Board
- L. ASTM E84 - Test Method for Surface Burning Characteristics of Building Materials
- M. ASTM E119 - Method for Fire Tests of Building Construction and Materials
- N. ASTM E330 - Test Method for Structural Performance of Windows, Curtain Walls, and Doors by Uniform Static air Pressure Difference
- O. ASTM G153 - Standard Practice for Operating Enclosed Carbon Arc Light Apparatus for Exposure of Nonmetallic Materials
- P. ICC Acceptance Criteria 219 - Acceptance Criteria for Exterior Insulation And Finish Systems

**1.4 ASSEMBLY DESCRIPTION**

- A. A code complying water resistive barrier, Continuous Insulation, metal lath, Scratch & Brown Concentrate (¾ in (19 mm)) embedment of a fiberglass mesh for crack suppression and an acrylic or elastomeric based finish coat.

**1.5 SUBMITTALS**

Santa Fe Magistrate Courthouse

- A. General: Submit Samples, Evaluation Reports and manufacturers product datasheets in accordance with Division 1 General Requirements Submittal Section.
- B. Samples: Submit samples for approval. Samples shall be of materials specified and of suitable size as required to accurately represent each color and texture used on project. Prepare each sample using same tools and techniques for actual project application. Maintain and make available, at job site, approved samples.
- C. Manufacturer's Warranty: Submit sample copies of Manufacturer's Warranty indicating Single Source Responsibility for Stucco Base coats, reinforcing mesh and finish coat as specified.

**1.6 QUALITY ASSURANCE**

- A. Qualifications:
  - 1. Manufacturer: Shall have marketed stucco assemblies in United States for at least five years and shall have completed projects of same general scope and complexity.
  - 2. Applicator: Shall be experienced and competent in installation of stucco materials, and shall provide evidence of a minimum of 5 years experience in work similar to that required by this section.
- B. Functional Criteria:
  - 1. General: Stucco application shall be to vertical substrates or to substrates sloped for positive drainage according to ASTM C926. Substrates sloped for drainage shall have additional protection from weather exposure that might be harmful to coating performance.
- C. Substrate Conditions:
  - 1. Substrate materials and construction shall conform to the building code having jurisdiction.
  - 2. Substrates shall be sound, dry and free of dust, dirt, laitance, efflorescence and other harmful contaminants.
  - 3. Substrate Dimensional Tolerances: Flat with ¼ in (6.4 mm) within any 4 ft (1.22 m) radius.
  - 4. Maximum deflection of substrate system under positive or negative design loads shall not exceed L/360 of span.
- D. Expansion and Control Joints: Continuous expansion and control joints shall be installed at locations in accordance with ASTM C1063 and ASTM C926.
  - 1. Substrate movement, and expansion and contraction of the three-coat stucco and adjacent materials shall be taken into account in design of expansion joints, with proper consideration given to sealant properties, installation conditions, temperature range, coefficients of expansion of materials, joint width to depth ratios, and other material factors. Minimum width of expansion joints shall be as specified by the designer or shown on the project drawings.
  - 2. In accordance with ASTM C1063, expansion or control joints shall be installed in walls not more than 144 ft<sup>2</sup> (13.4 m<sup>2</sup>) in area, and not more than 100 ft<sup>2</sup> (9.3 m<sup>2</sup>) in area for all non-vertical applications. The distance between joints shall not exceed 18 ft (5.5 m) in either direction or a length-to-width ratio of 2-½ to 1.
  - 3. For direct application to concrete or masonry, stucco joints are required only at control/expansion joints in the underlying concrete or masonry

**1.7 DELIVERY, STORAGE, AND HANDLING**

- A. Delivery: Deliver products in original packaging with manufacturer's identification.
- B. Storage: Store products in a dry location, out of direct sunlight, off the ground, and protected from moisture.

**1.8 SITE / ENVIRONMENTAL CONDITIONS**

- A. Substrate Temperature: Do not apply products to substrates whose temperature are below 40°F (4.4°C) or contain frost or ice.
- B. Inclement Weather: Do not apply products during inclement weather, unless appropriate protection is employed.

Santa Fe Magistrate Courthouse

- C. Sunlight Exposure: Avoid, when possible, installation of the products in direct sunlight. Application of finishes in direct sunlight in hot weather may adversely affect aesthetics.
- D. Do not apply stucco base coats or finishes if ambient temperature falls below 40°F (4°C) within 24 hours of application. Protect stucco from uneven and excessive evaporation during dry weather and strong blasts of dry air.
- E. Prior to installation, the wall shall be inspected for surface contamination, or other conditions that may adversely affect the performance of the stucco assembly, and shall be free of residual moisture.

**1.9 COORDINATION AND SCHEDULING:**

- A. Coordination: Coordinate Stucco Assembly installation with other construction operations.

**1.10 WARRANTY**

- A. Warranty: Upon request, at completion of installation, provide written warranty.

**PART 2 - PRODUCTS**

**2.1 MANUFACTURERS**

- A. Manufacturer: SIKA USA. Brands include: Parex Armourwall Water Master DM and Lahabra Fastwall 300 WK HE assemblies are both brands of SIKA Facades and are basis of design for use under this specification. Please contact Andy Townes CSI, CCPR Architectural and Commercial Sales Manager at [andy@ziamaterials.com](mailto:andy@ziamaterials.com) and 505-238-0110
- B. Components: Obtain components manufactured by Parex and Lahabra assemblies from authorized distributors. No substitutions or additions of other materials are permitted. Single Source Requirement.
- C. Other manufacturers must be submitted through the Prior Approval process and proven equal or superior to the Parex and Lahabra basis of design 10 days prior to bid date.

**2.2 MATERIALS**

- A. Air and Weather Barrier: Omega AkroGuard and AkroGuard Fabric
  - 1. Parex USA Weather Seal – a fluid applied air and weather barrier to be applied over all substrates
  - 2. Sika Wall Sheathing Fabric – A spun-bonded non-woven reinforced polyester web for use with Parex fluid applied air/weather-resistive barriers.
  - 3. SikaWall-80 MaxFlash: A one-component elastomeric material for use as a flexible flashing membrane.
  - 4. SikaWall Flash Seal NP Transitional Membrane / Expansion Joint Flashing: A 32-mil thick self-adhering and self-sealing composite membrane of polyester fabric and butyl adhesive. Compatible with Parex liquid air/weather resistive barriers.
- B. Drainage Mat: Three-dimensional drainage core consisting of fused, entangled filaments.
- C. Continuous Insulation:
  - 1. Extruded polystyrene: Dow Dupont XPS or Kingspan XPS, extruded polystyrene.
  - 2. Edges: square within 1/32" per ft. (0.8 mm per m).
  - 3. Thickness: tolerance of +/- 1/16" (1.6 mm). Minimum of 2.0"
  - 4. Maximum Size: 4' x 8' (61 cm x 2.44 m).
  - 5. Length and width: tolerance of +/- 1/16" (1.6 mm).
  - 6. Minimum R Value: R-10ci.
- D. Stucco Base Coat Assembly Materials: Omega DiamondWall
  - 1. Amourwall 300/Fiber-47 Scratch & Brown Stucco Base Concentrate: A factory blended portland cement, fibers, hydrated lime and proprietary ingredients, cement scratch and brown coat mixed in the field with sand, conforming to ASTM C926
- E. Crack Suppression, Crack Shield Fiber Glass Mesh:

Santa Fe Magistrate Courthouse

1. Stucco Level Coat™: Copolymer based, factory blend of cement and proprietary ingredients requiring addition of water. **Omega DryBond**
  2. 355 Standard Mesh: Weight 4.5 oz/yd<sup>2</sup> (153 g/m<sup>2</sup>) reinforcing mesh. **Omega BCR Mesh**
- F. Waterproof Basecoat: – Weather Dry. For use on all horizontal slopes/parapets/windowsills etc. **Omega StyroGlue Plus**
- G. Tinted Primer: 100% acrylic-based coating to prepare surfaces for acrylic finishes. **Omega Rapid Prime**
- H. Acrylic based finish:
1. Primer: 100% acrylic primer that is tinted to the same color as the finish coat. **Omega Rapid Prime**
  2. Parex/Lahabra DPR a factory blended, 100 % acrylic polymer based textured finish, integrally colored. **Omega Akroflex Acrylic finish**
  1. Finish texture and color as selected by Project Designer
- I. **Direct Applied Soffits (DAFS)** **Omega DEFS System**
1. Gold Bond EXP Fiberglass faced gypsum sheathing
  2. Parex 121 Basecoat **Omega Drybond**
  3. 3.4 Oz Fiberglass mesh **Omega Akroflex Mesh**

### 2.3 RELATED MATERIALS AND ACCESSORIES

- A. General: Stucco Assembly and its related materials shall conform to ASTM C926, this specification and Product Data Sheets.
- B. Substrate Materials:
1. Gypsum Sheathing: Minimum ½ in (13 mm) thick, core-treated, weather-resistant, exterior gypsum sheathing complying with ASTM C79 or ASTM C1177. Gold Bond EXP by National Gypsum
  2. Cement Board Sheathing, Minimum ½ in thick, conforming to ASTM C1186.
  3. Fiberboard: Minimum ½ in (13 mm) thick fiberboard complying with ANSI/AHA A194.1 as a regular density sheathing.
  4. Plywood: Minimum 5/16 in (8 mm) thick exterior grade or Exposure I plywood for studs spaced 16 in (406 mm) o.c. and ¾ in (9.5 mm) thick exterior type plywood minimum for studs spaced 24 in (610 mm) o.c. Plywood shall comply be exterior grade or Exposure 1 and comply with DOC PS-1
  5. Oriented Strand Board (OSB): 7/16 - ½ in Wall-16 or Wall-24, approved by the APA, TECO, or PSI/PTL. Stamped as Exposure 1 or Exterior Sheathing with a PS2 or PRP-108 rating. The system is qualified for application to OSB (oriented strand board) sheathing only in areas shown in the Parex USA "Acceptable Substrates and Areas of Use" Technical Bulletin.
  6. Concrete Masonry Construction: Painted (coated) and non-painted (uncoated). Shall be in conformance with the building code. Mortar joints to be struck flush and not tooled or grooved.
- C. Lath and Accessories: Conform to ASTM C847, ASTM C933, ASTM C1032, ASTM C1063 and Appendix
1. Accessories: Manufacturer's standard steel products with minimum G60 galvanizing
  2. Metal Plaster Bases: Field to be a minimum 2.5 lb/yd<sup>2</sup> expanded metal diamond lath.
  3. Weep Screeds: ¾" grounds, foundation weep screed with minimum 3-½ inch vertical attachment flange.
  4. Control joints, plaster stops, corner aid etc... to be galvanized and a minimum of ¾" grounds.
  5. Fasteners: To be galvanized and suitable to substrates specified. Must be long enough for a minimum penetration into studs or CMU of 1"
  6. Crack Suppression Reinforcing Mesh
    - a. Parex USA Standard Mesh: Weight 4.5 oz/yd<sup>2</sup> (153 g/m<sup>2</sup>) #355 reinforcing mesh.
- D. Seals, Sealants and Bond Breakers: Sealants shall conform to ASTM C 920, Grade NS, Class 25, Use NT. Backer rod shall be closed-cell polyethylene foam.

1. Single Component, Tremco Spectrem 1,

## **PART 3 - EXECUTION**

### **3.1 EXAMINATION**

- A. Verify project site conditions under provisions of Section 01 00 00.
- B. Compliance: Comply with manufacturer's instructions for installation of stucco assembly products.
- C. Substrate Examination: Examine prior to stucco base installation as follows:
  1. Substrate shall be of a type approved by stucco manufacturer. Plywood and OSB substrates shall be gapped  $\frac{1}{8}$  in (3.2 mm) at all edges.
  2. Substrate shall be examined for soundness, and other harmful conditions.
  3. Substrate shall be free of dust, dirt, laitance, efflorescence, and other harmful contaminants.
  4. Substrate construction in accordance with substrate material manufacturer's specifications and applicable building codes.
- D. Advise Contractor of discrepancies preventing installation of the Stucco Assembly . Do not proceed with the Stucco Assembly work until unsatisfactory conditions are corrected.

### **3.2 PREPARATION**

- A. Water Resistive Barrier:
  1. The water-resistive barrier is placed over all substrates except concrete or unpainted masonry. Painted (coated) CMU is to use a bond breaker such as asphalt paper and lath if the paint or coating cannot be removed.
  2. Installed according to manufacturers instructions.
- B. Ensure that metal flashing has been installed per Specification Section 07 60 00 - Flashing and Sheet Metal.

### **3.3 MIXING**

- A. Mix proprietary products in accordance with manufacturer's instructions, including the applicable Stucco Assembly Product Data Sheets.

### **3.4 APPLICATION**

- A. General: Stucco application shall conform to its related materials shall conform to ASTM C926, this specification and manufacturers Product Data Sheets.
- B. Fluid applied air and weather barrier. Follow manufacturers written instructions.
- C. Drainage mat: Follow manufacturers instructions for fastener placement and frequency.
- D. Stucco Base:
  1. Scratch Coat:
    - a. Apply scratch coat to a minimum thickness of  $\frac{3}{8}$  in (10 mm), using sufficient trowel pressure to key stucco into lath or to create bond to substrates as applicable.
    - b. Prior to initial set, scratch horizontally to provide key for bond of brown coat.
    - c. Moist cure scratch coat with clean potable water for at least 48 hours in accordance with ASTM C926 and the building codes following initial application (unless brown coat is applied as soon as the scratch coat has achieved sufficient rigidity to support the brown coat).
  2. Brown Coat:
    - a. Apply brown coat to a minimum thickness of  $\frac{3}{8}$  in (10 mm), using sufficient trowel pressure to key stucco into scratch coat.
    - b. Rod surface to true plane and float to densify.
    - c. Trowel to smooth and uniform surface to receive acrylic polymer finish coat
    - d. Moist cure brown coat with clean potable water for at least 48 hours, in accordance with ASTM C926 and the building codes.

**E. Leveling and Reinforcing Mesh**

1. After Moist Curing, allow Stucco Base to air dry a minimum of 24 hours before applying the leveling and fiberglass mesh coat.
2. Using a stainless steel trowel, apply the Level Coat over the stucco Base at a thickness of  $\frac{1}{16}$  –  $\frac{3}{32}$  in. (1.6 – 2.4 mm).
3. Fully embed the reinforcing mesh into the wet level coat or wet brown coat, including diagonal strips at corners of openings and trowel smooth. If standard mesh is used, seams are overlapped 2½ in (63 mm), and if the intermediate mesh is used, seams are butted and covered by strips of detail mesh 356.

-OR-

3. While brown coat is wet, embed fiberglass mesh and trowel smooth.
4. The acrylic primers and finishes can be applied as soon as the level coat has cured, typically within 24 hours.

**F. Expanded Polystyrene Features over level coat: (Foam shapes, pop-outs)**

1. Install back-wrap mesh at EPS terminations.
2. Apply adhesive to backs of insulation boards with a notched trowel. Allow to dry a minimum of 12 hours.
3. Apply Base coat to the entire foam shape and pull the backwrap mesh around the foam shapes and fully embed it into the base coat.
4. Immediately embed the reinforcing mesh in the wet Base coat.

**G. Primer and Finish:**

1. Ambient and surface temperature must be 40°F (4°C) or higher during application and drying time. Supplemental heat and protection from precipitation must be provided as needed.
2. Apply tinted primer over all surfaces to receive acrylic based finish coats.
3. Apply exterior wall finish in number of coats thickness recommended by manufacturer to achieve texture indicated, using sufficient trowel pressure or spray velocity to bond finish to base coat.
4. Protect Finish Coats from inclement weather until completely dry.
5. Cold joints, texture differences, staging marks will not be acceptable and will be required to be repaired.

**H. Curing:**

1. Keep stucco moist for at least 48 hours (longer in dry weather) by lightly fogging walls. Start light fogging after initial set of 1–2 hours.
2. Air dry acrylic based and elastomeric finish coats only, do not wet cure.

**3.5 APPLICATION FOR DIRECT BOND TO CONCRETE BASED SUBSTRATES**

**A Stucco Base**

1. Apply bonding agent over all cementitious substrates allow to dry until tacky.
2. Apply a brown coat to a minimum thickness of 3/8"
3. Darby and Rod flat
4. While this brown coat is still wet, embed the crack suppression mesh.
5. Once fully cured, apply the tinted primer
6. Apply the acrylic based elastomeric finish

**3.5 CLEAN-UP**

- A. Removal: Remove and legally dispose of stucco component debris material from job site.

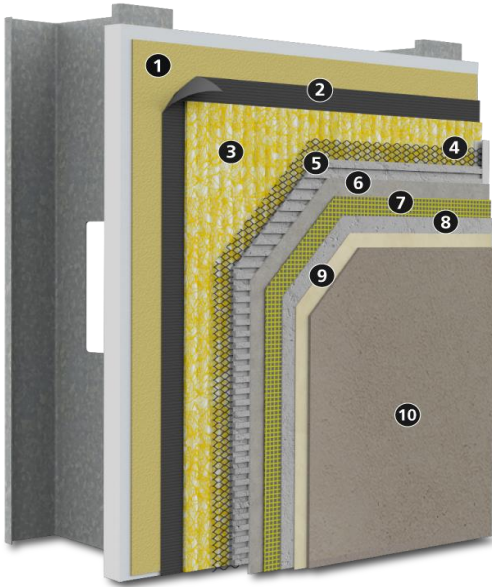
### **3.6 PROTECTION**

- A. Provide protection of installed materials from water infiltration into or behind them.
- B. Provide protection of installed stucco from dust, dirt, precipitation, and freezing during installation.
- C. Provide protection of installed finish from dust, dirt, precipitation, freezing, and continuous high humidity until fully dry.
- D. Clean exposed surfaces using materials and methods recommended by the manufacturer of the material or product being cleaned. Remove and replace work that cannot be cleaned to the satisfaction of the Designer/Owner.

**END OF SECTION 09-2400**

# StoPowerwall® DrainScreen®

Portland cement stucco with StoGuard® air and water-resistive barrier, Sto DrainScreen advanced cavity wall design, and Sto high performance finishes



Substrate: Glass mat gypsum sheathing in compliance with ASTM C 1177, building code compliant wood-based sheathing (plywood or OSB), concrete, or concrete masonry (CMU) wall construction.

1)	Air and Water-resistive Barrier (AWRB), choose among: <ul style="list-style-type: none"> <li>• Sto Gold Coat®</li> <li>• Sto AirSeal®</li> <li>• StoGuard® VaporSeal®</li> <li>• Sto GoldSeal™ STPE</li> <li>• StoShield™ SA VP</li> <li>• StoShield™ SA NP</li> </ul>
2)	WRB: code compliant paper or felt Water-Resistive Barrier
3)	Drainage Mat: Sto DrainScreen
4)	Metal Plaster Base: code compliant minimum 2.5 lb/yd <sup>2</sup> (1.4 kg/m <sup>2</sup> ) self-furred galvanized steel diamond mesh metal lath or Structalath SFCR Twin Track 2.5 self-furring welded wire lath
5), 6)	Stucco: ASTM C926 compliant stucco scratch and brown coat coat (as furnished or listed by Sto Corp.)
7), 8)	Sto Crack Defense (optional): Sto Mesh Reinforcement (7) embedded in Sto Base Coat (8)
9)	Sto Primer (optional)
10)	Choose among: <ul style="list-style-type: none"> <li>• Sto Textured Finishes</li> <li>• Sto Custom Cast Finish: Wood or Brick</li> <li>• Sto Signature Series or Sto Specialty Finishes</li> </ul>

System Accessory: StoSeal STPE Sealant for use as an exterior weather seal around wall penetrations, at dynamic joints in wall construction, and as an interior air seal for air barrier continuity.

## System Description

StoPowerwall DrainScreen is a drainable stucco wall assembly with a continuous air and water-resistive barrier (AWRB) and Sto DrainScreen advanced cavity wall design. It combines the strength and durability of traditional stucco with Sto high performance finishes in a fully tested wall cladding assembly.

## Uses

StoPowerwall DrainScreen can be used in residential or commercial wall construction where superior aesthetics, and air and moisture control are essential in the climate extremes of North America

## Features

## Benefits

Integrally colored factory produced finishes	Consistent color and aesthetics increase curb appeal
StoGuard air and water-resistive barrier	Fully compatible, code compliant air and water-resistive barrier
Impact and puncture resistance	Withstands abuse, reduced maintenance
Sto DrainScreen advanced cavity wall design	Promotes drainage and drying; complies with codes that require a drainage gap beneath stucco
Optional Sto Crack Defense	Resists stucco cracking

## Properties

Weight (excluding sheathing / studs)	< 12 psf (56.6 kg/m <sup>2</sup> )
Assembly Thickness (from outer face of sheathing)	Nominal 2-in (51mm)
R-value (from outer face of sheathing)	0.84 ft <sup>2</sup> •h•°F / Btu (0.148 m <sup>2</sup> •K / W)
Wind Load Resistance	+ 202 / - 144 psf ultimate loads achieved (+9.67 / - 6.89 kPa)
Compliance	<ul style="list-style-type: none"> <li>• 2018 and 2021 IBC, IRC, and IECC</li> <li>• ASHRAE 90.1-2022</li> </ul>
Construction Types, Fire Resistance	<ul style="list-style-type: none"> <li>• NFPA 285 tested for use on noncombustible construction</li> <li>• ASTM E119 hourly rated assemblies</li> </ul>

## Warranty

Up to 15-year Limited Warranty available on Sto products, depending on options selected.

## Maintenance

Requires periodic cleaning to maintain appearance, repair of cracks and impact damage if they occur, recoating to enhance appearance of weathered finish. Sealants and other façade components must be maintained to prevent water infiltration.

# StoPowerwall® DrainScreen®

Portland cement stucco with StoGuard® air and water-resistive barrier, Sto DrainScreen advanced cavity wall design, and Sto high performance finishes

Limitations
Minimum stucco thickness, 3/4-in (19mm), maximum stucco thickness 7/8-in (22mm), applied in two coats, scratch and brown coat
Refer to ICC-ESR 1233 for use on noncombustible construction. Hourly fire-resistance of rated base wall assemblies is maintained by StoPowerwall DrainScreen.
Wind load resistance: + 202 / -144 psf (+9.66 / -6.89 kPa) ultimate loads achieved over steel studs with gypsum wallboard attached to interior. Wind loads achieved without Sto DrainScreen component. Consult ICC ESR-2323 and IAPMO 382 for other assemblies over steel and wood studs (assemblies have a safety factor of 3 applied). Ultimate wind load resistance depends on sheathing, sheathing attachment, lath attachment, and stiffness of supporting wall construction. Test any proposed assembly as needed and apply appropriate safety factor in accordance with local code requirements.
Cracking can occur in portland cement stucco. Cracking is generally not caused by a material defect in the stucco and can be minimized by following sound design and construction practices such as: proper installation of lath, proper incorporation of stress relief joints in the construction, proper sand gradation for field mixed stucco, proper proportioning of stucco mix ingredients, use of the minimum amount of water in the stucco mix for placement of stucco, avoiding the use of excess water, moist curing of the stucco after it has been applied, and proper sequencing of construction to avoid stresses in the freshly placed stucco.
Efflorescence is a normal occurrence in portland cement-based products and can affect final appearance of finish products installed over stucco.
For use on vertical above grade walls only. Do not use on roofs or roof-like surfaces, on surfaces subject to in-service water immersion, or below grade. Maintain clearance of minimum 4-in (102mm) above earth grade and minimum 2-in (51mm) clearance above pavers or sidewalks.
Dark or highly saturated finish colors may require added maintenance compared to light or pastel colors.
Air and Water-Resistive Barrier, drainage mat, and base coat materials are not intended for prolonged weather exposure. Refer to component product bulletins for specific limitations involving exposure, use, handling and storage of component materials.

Sustainable Design	
Air Quality and VOC Compliance	
All finish coatings, adhesives, AWRB coatings and joint treatments meet US EPA (40 CFR 59) and South Coast AQMD (Rule 1113) VOC requirements	
LEED Credit Eligibility	
System has high potential for LEED and other sustainability program credits based on use of continuous air and water-resistive barrier and VOC compliance	
Regulatory Compliance and Standards Testing	
ASTM C926	StoPowerwall stucco and listed stuccos comply with ASTM C926 (as required by the IBC, IRC and most state codes)
ICC ESR-1233	Sto air & water-resistive barriers Comply with 2018 and 2021 IBC, IRC and IECC
ASHRAE 90.1-2022 <sup>1</sup>	StoPowerwall DrainScreen complies with Section 5, Building Envelope, air barrier requirements
ASTM E2178 <sup>2</sup> , ASTM 2357 <sup>3</sup>	Sto Gold Coat meets material and assembly air leakage resistance criteria
NFPA 285 <sup>4</sup>	StoPowerwall DrainScreen meets IBC criteria for use on noncombustible construction. Refer to ICC ESR-1233.
ASTM E 119 <sup>5</sup>	StoPowerwall DrainScreen maintains the fire-resistance rating of hourly rated load bearing and non-load bearing concrete, concrete masonry, steel frame and wood frame base wall assemblies.

1. *Energy Standard for Buildings Except Low-Rise Residential Buildings*
2. *Standard Test Method for Air Permeance of Building Materials*
3. *Standard Test Method for Determining Air Leakage of Air Barrier Assemblies*
4. *Standard Fire Test Method for Evaluation of Fire Propagation Characteristics of Exterior Non-Load-Bearing Wall Assemblies Containing Combustible Components*
5. *Standard Test Methods for Fire Test of Building Construction and Material*

For complete information refer to [www.stocorp.com](http://www.stocorp.com)

<b>Sto Corp.</b> 3800 Camp Creek Parkway Building 1400, Suite 120 Atlanta, GA 30331  Tel: 404-346-3666 Toll Free: 1-800-221-2397 Fax: 404 346-3119  <a href="http://www.stocorp.com">www.stocorp.com</a>	<b>SB - 6400</b> Revision: 008 Date: 05/2025	<p style="text-align: center;"><b>Attention</b></p> <p>Sto products are intended for use by qualified professional contractors, not consumers, as a component of a larger construction assembly as specified by a qualified design professional, general contractor or builder. They should be installed in accordance with those specifications and Sto's instructions. Sto Corp. disclaims all, and assumes no, liability for on-site inspections, for its products applied improperly, or by unqualified persons or entities, or as part of an improperly designed or constructed building, for the nonperformance of adjacent building components or assemblies, or for other construction activities beyond Sto's control. Improper use of Sto products or use as part of an improperly designed or constructed larger assembly or building may result in serious damage to this product, and to the structure of the building or its components. <b>STO CORP. DISCLAIMS ALL WARRANTIES EXPRESS OR IMPLIED EXCEPT FOR EXPLICIT LIMITED WRITTEN WARRANTIES ISSUED TO AND ACCEPTED BY BUILDING OWNERS IN ACCORDANCE WITH STO'S WARRANTY PROGRAMS WHICH ARE SUBJECT TO CHANGE FROM TIME TO TIME.</b> For the fullest, most current information on proper application, clean-up, mixing and other specifications and warranties, cautions and disclaimers, please refer to the Sto Corp. website, <a href="http://www.stocorp.com">www.stocorp.com</a></p>
---	--	---